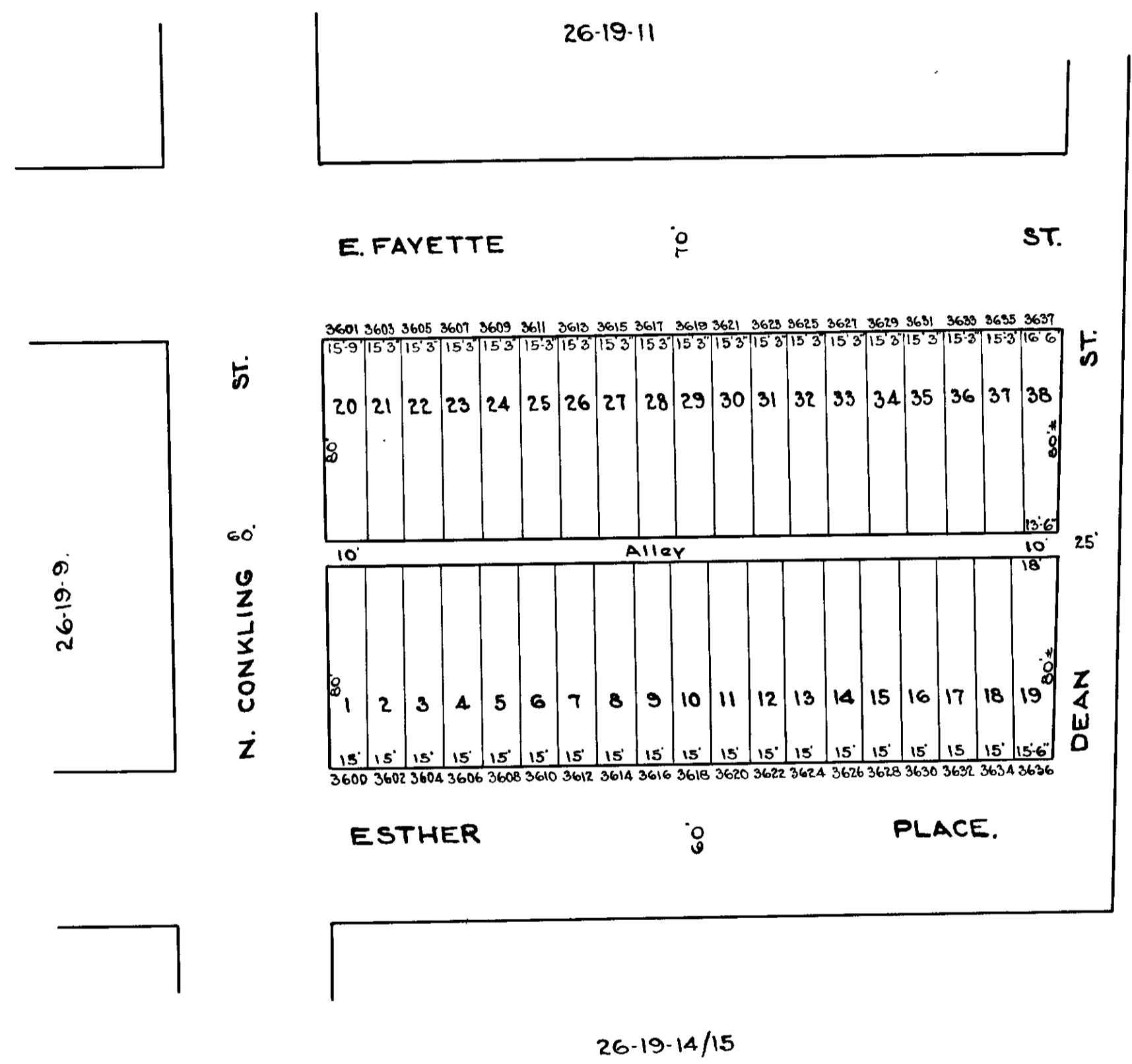


REVISIONS.
Dim. Lots, 19, 21-38, per Deed, Field C. Sh 1609A.



N. CONKLING ST. 60'

3601	3603	3605	3607	3609	3611	3613	3615	3617	3619	3621	3623	3625	3627	3629	3631	3633	3635	3637
15' 9"	15' 3"	15' 3"	15' 3"	15' 3"	15' 3"	15' 3"	15' 3"	15' 3"	15' 3"	15' 3"	15' 3"	15' 3"	15' 3"	15' 3"	15' 3"	15' 3"	15' 3"	16' 6"
20	21	22	23	24	25	26	27	28	29	30	31	32	33	34	35	36	37	38
Alley																		
1	2	3	4	5	6	7	8	9	10	11	12	13	14	15	16	17	18	19
15'	15'	15'	15'	15'	15'	15'	15'	15'	15'	15'	15'	15'	15'	15'	15'	15'	15'	15' 6"
3600	3602	3604	3606	3608	3610	3612	3614	3616	3618	3620	3622	3624	3626	3628	3630	3632	3634	3636

ESTHER PLACE.

NOTICE
 THIS IS A REAL PROPERTY PLAT AS PROVIDED
 FOR UNDER ARTICLE 76(H) OF THE CITY CHARTER
 IT IS COMPILED FROM TITLE AND OTHER
 SOURCES AND IS NOT AN AUTHENTIC SURVEY

NOTE ÷ BLOCK 26-19-10 For 1941.

6269

CITY OF BALTIMORE
 DEPARTMENT OF PUBLIC WORKS
 BUREAU OF PLANS & SURVEYS
 PROPERTY LOCATION DIVISION
 WARD 26 SECTION 19
 BLOCK 6269
 SCALE: 1" = 50' DATE: Oct. 1939

TRACED BY: C.R. Ward
 LETTERED BY: _____
 CHECKED BY: _____