

REVISIONS

BLK. RD'WN PER D.P. & App. CH. SM. 89-067-89073

151

N. PARRISH AL.

W. SARATOGA

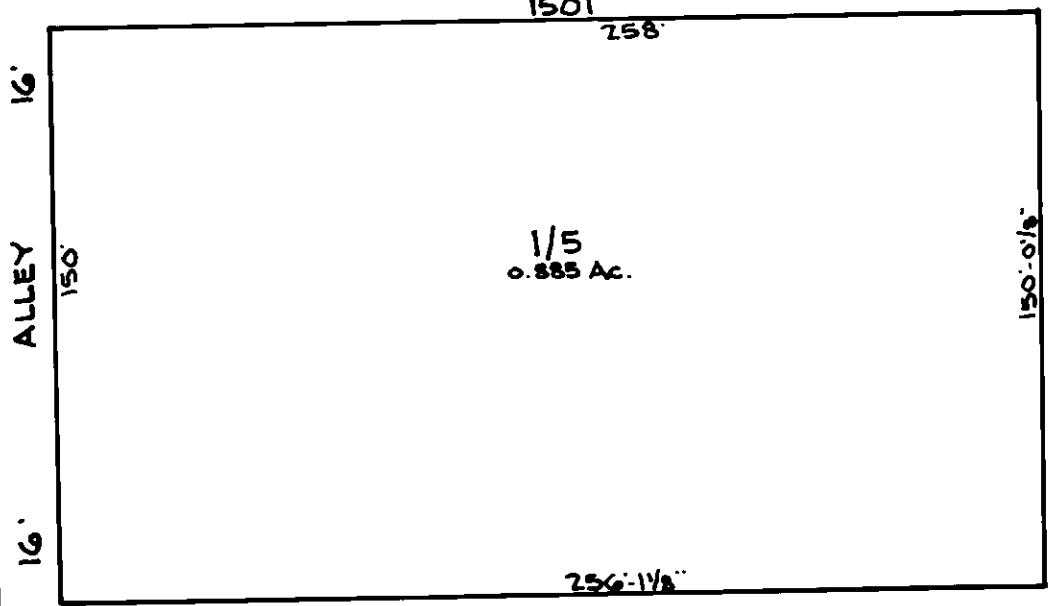
(60')

ST.

ST.

ST.

225	227	229	231	233	235	237	239	241	243	245
14:5 1/2"	14:5 1/2"	14:5 1/2"	14:5 1/2"	14:5 1/2"	14:5 1/2"	14:5 1/2"	14:5 1/2"	14:5 1/2"	14:5 1/2"	14:5 1/2"
61:8 1/2"	61:5 3/4"	61:3 1/2"	61:1 1/4"	60:11"	60:8 3/4"	60:6 1/2"	60:4 1/2"	60:1 3/4"	59:11 3/8"	59:9"
71	72	73	74	75	76	77	78	79	80	81



27	26	25	24	23	22	21	20	19	18	17	16	15	14	13	12	11	10	9	8	7	6
14:7 1/2"	14:7 1/2"	14:7 1/2"	14:7 1/2"	14:7 1/2"	14:7 1/2"	14:7 1/2"	14:7 1/2"	14:7 1/2"	14:7 1/2"	14:7 1/2"	14:7 1/2"	14:7 1/2"	14:7 1/2"	14:7 1/2"	14:7 1/2"	14:7 1/2"	14:7 1/2"	14:7 1/2"	14:7 1/2"	14:7 1/2"	14:7 1/2"
1542	1540	1538	1536	1534	1532	1530	1528	1526	1524	1522	1520	1518	1516	1514	1512	1510	1508	1506	1504	1502	1500

PENROSE AVE. DEDED TO MCC SEP 1885-479, 10-31-88 (36) PLAT # III-A-50.

49	48	47	46	45	44	43	42	41	40	39	38	37	36	35	34	33	32	31	30	29	28
14:5 1/2"	14:1 1/2"	14:1 1/2"	14:1 1/2"	14:1 1/2"	14:1 1/2"	14:1 1/2"	14:1 1/2"	14:1 1/2"	14:1 1/2"	14:1 1/2"	14:1 1/2"	14:1 1/2"	14:1 1/2"	14:1 1/2"	14:1 1/2"	14:1 1/2"	14:1 1/2"	14:1 1/2"	14:1 1/2"	14:1 1/2"	14:1 1/2"

70	69	68	67	66	65	64	63	62	61	60	59	58	57	56	55	54	53	52	51	50
19:6"	19:6"	19:6"	17'	17'	17'	15'	17'	17'	17'	16:5 1/2"	14:7 1/2"	14:7 1/2"	14:7 1/2"	14:7 1/2"	14:7 1/2"	14:7 1/2"	14:7 1/2"	14:7 1/2"	14:7 1/2"	14:7 1/2"
1538	1536	1534	1532	1530	1528	1526	1524	1522	1520	1518 1/2	1518	1516	1514	1512	1510	1508	1506	1504	1502	1500

W. LEXINGTON

(60')

ST.

N. GILMOR

N. STRICKER

181

SHEETS IN SET - 2
SH. NO. 1

NOTE: FOR STREET & ALLEY CLOSINGS, SEE SH. # 2.

NOTE: FOR OLD CONDITIONS SEE SHEET No. 2

TRACED BY *B. Beatty*
LETTERED BY *2/8/88*
CHECKED BY

NOTICE
THIS IS A REAL PROPERTY PLAT AS PROVIDED FOR UNDER ARTICLE 76(d) OF THE CITY CHARTER IT IS COMPILED FROM TITLE AND OTHER SOURCES AND IS NOT AN AUTHENTIC SURVEY.

CITY OF BALTIMORE
DEPARTMENT OF PUBLIC WORKS
PROPERTY LOCATION DIVISION
WARD **19** SECTION **4**
BLOCK **166**
SCALE: 1" = 50' DATE: **AUGUST, 1988**