

~~138~~  
 NOW BED OF I-170

W. MULBERRY ST.

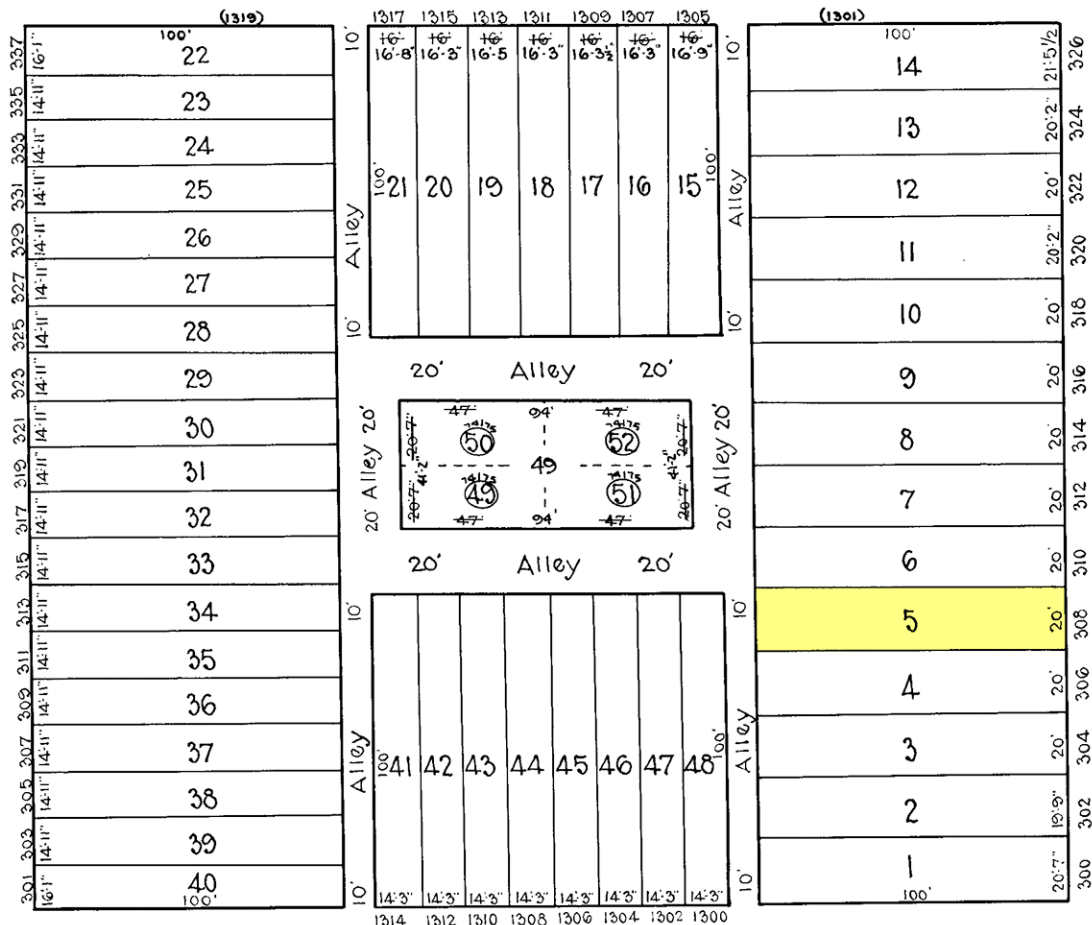
ST.

ST.

ST.

N. CALHOUN

N. CAREY



W. SARATOGA

ST.

168

**NOTICE**

THIS IS A REAL PROPERTY PLAT AS PROVIDED  
 FOR UNDER ARTICLE 76(d) OF THE CITY CHARTER.  
 IT IS COMPILED FROM TITLE AND OTHER  
 SOURCES AND IS NOT AN AUTHENTIC SURVEY.

CITY OF BALTIMORE  
 DEPARTMENT OF PUBLIC WORKS  
 BUREAU OF SURVEYS  
 PROPERTY LOCATION DIVISION

WARD 19 SECTION 1  
 BLOCK 153

SCALE 1" = 40'-0" DATE Oct. 1929.

TRACED BY Geo. Moorehead

LETTERED BY W. M. L. G.

CHECKED BY