

~~138~~
 NOW BED OF I-170

W. MULBERRY ST.

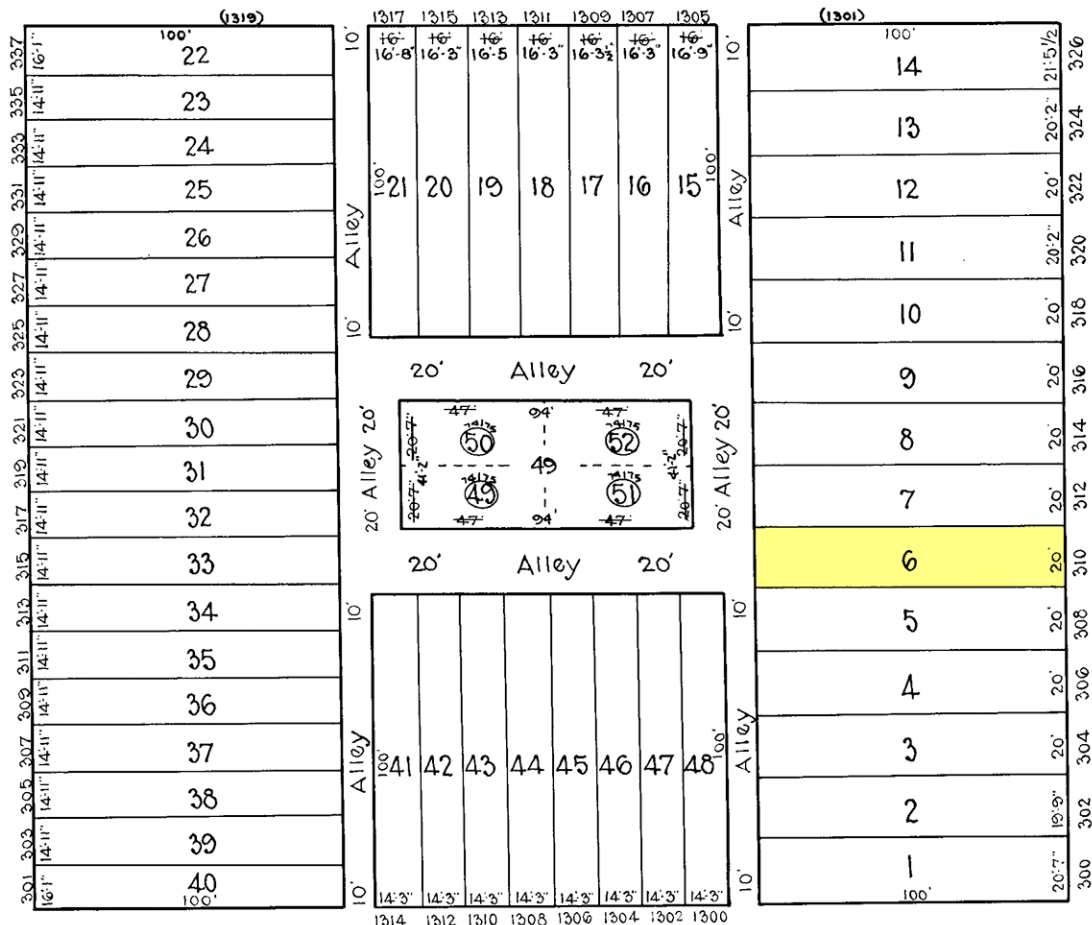
ST.

ST.

ST.

N. CALHOUN

N. CAREY



152

154

W. SARATOGA ST.

ST.

168

NOTICE

THIS IS A REAL PROPERTY PLAT AS PROVIDED
 FOR UNDER ARTICLE 76(d) OF THE CITY CHARTER.
 IT IS COMPILED FROM TITLE AND OTHER
 SOURCES AND IS NOT AN AUTHENTIC SURVEY.

CITY OF BALTIMORE
 DEPARTMENT OF PUBLIC WORKS
BUREAU OF SURVEYS
 PROPERTY LOCATION DIVISION
 WARD 19 SECTION 1
BLOCK 153
 SCALE 1" = 40'-0" DATE Oct. 1929.

TRACED BY Geo. Moorehead
 LETTERED BY W. M. L. G.
 CHECKED BY