

REVISIONS

BLK REVISED & CORR. PER DEEDS & B.S. PLAT CH. SH. 87-114 + 87-115
 LOT 13 CORR. PER DEED C.S.H. 85-830
 LOT 56/60 PER DEED, C.S.H. 89-410

2218

13000
1700

W. MULBERRY

(50)

ST

N. FRANKLINTOWN
W. SARATOGA ST.

47
1.421 Ac.

28/34
0.230 Ac.

67/68
1.615 Ac.

65/66
0.681 Ac.

4 56/60
8.885 Ac.
D-19 TO LOT 71
8.685 - RES 3-29-89

63/64
1.472 Ac.

69
1.095 Ac.

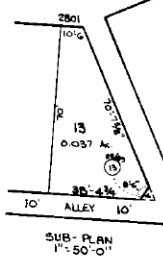
61/62
2.527 Ac.

4 56/60
8.885 Ac.

2183-D

2215

W. MULBERRY ST.



80/89
56/60

SHEET

SHEETS IN SET-2
SH. No. 1

○ DENOTES CONDITIONS FOR BLK 2219-A FOR 86/87

CITY OF BALTIMORE
DEPARTMENT OF PUBLIC WORKS

PROPERTY LOCATION DIVISION

WARD 20 SECTION 23

BLOCK 2219

SCALE 1"=100' DATE SEPT. 1, 1986

NOTICE

THIS IS A REAL PROPERTY PLAT AS PROVIDED FOR UNDER ARTICLE 76(d) OF THE CITY CHARTER IT IS COMPILED FROM TITLE AND OTHER SOURCES AND IS NOT AN AUTHENTIC SURVEY.

TRACED BY: [Signature]
 LETTERED BY: [Signature]
 CHECKED BY: [Signature]