

REVISIONS

Lots 1 to 5 Cons. Per App. No. 33 1-7-32
 " 39 & 40 Rev. Per Deeds - Field Bauersfield M. Ch. 1474-A
 Lots 13-14 & 88 Cons'd Per App. 533 C. Sh. 1677.
 Lots 16-18 Cons'd per App & D. C. Sh. 3375
 Lots 23 to 27 Dim. Changed Per Deeds C. Sh. 4098A
 Lot 28-29 Cons'd Per Field C. Sh. 9563
 Lot 15 Ho. No. Per Field C. Sh. 9564-A
 Lots 26 & 27 Cons'd Per D. O. C. Sh. 9906
 Lots 23 & 24 Cons'd Per D. O. C. Sh. 9954
 Lot 1 Per Deed, C. Sh. 432
 Lot 6/8 Per App. C. Sh. 76-153
 Lots 44-53, 75-79, 89-95, 104-115 Dim. Ch. Per Deeds, C. Sh. 97-027, 028, 031 & 032

226

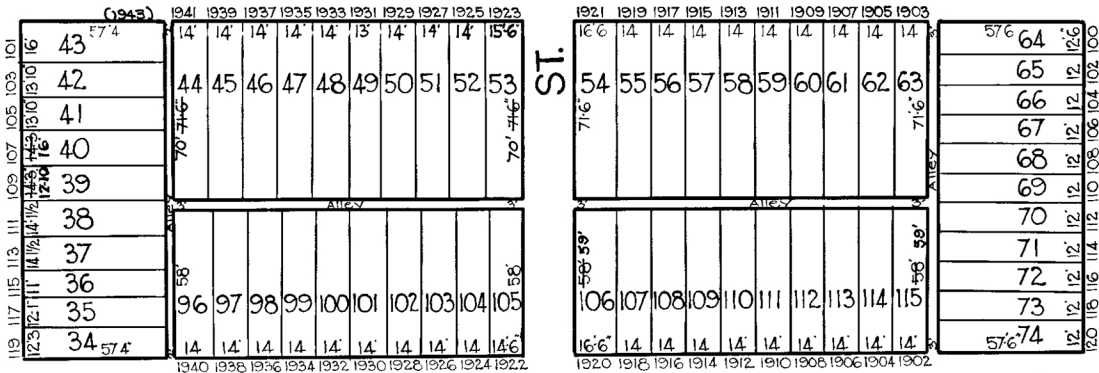
W. LOMBARD

ST.

ST.

ST.

ST.



241

243

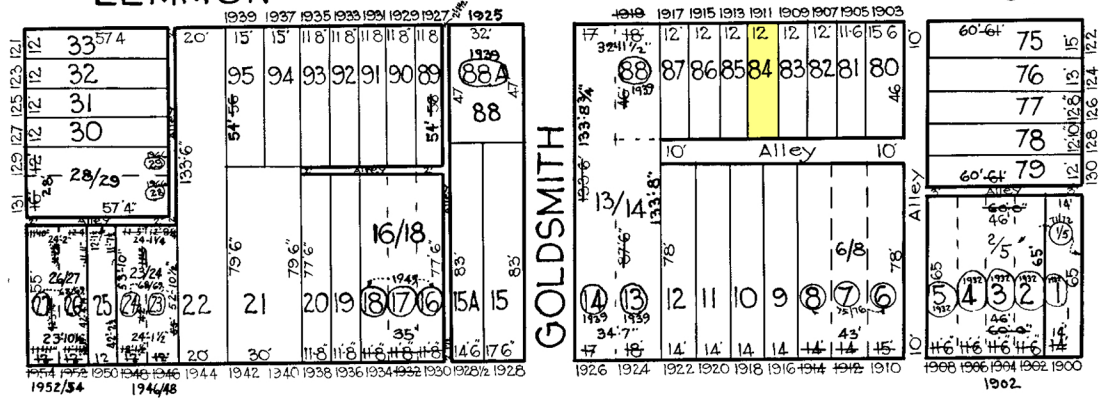
LEMMON

ST.

S. PAYSON

GOLDSMITH

S. MONROE



W. PRATT

ST.

259

NOTICE

THIS IS A REAL PROPERTY PLAT AS PROVIDED FOR UNDER ARTICLE 76(d) OF THE CITY CHARTER IT IS COMPILED FROM TITLE AND OTHER SOURCES AND IS NOT AN AUTHENTIC SURVEY

CITY OF BALTIMORE
 DEPARTMENT OF PUBLIC WORKS
 BUREAU OF SURVEYS
 PROPERTY LOCATION DIVISION

WARD 20 SECTION 12
 BLOCK 242

SCALE 1/4" = 50 FT. DATE Nov. 1929

TRACED BY C. H. BAIN

LETTERED BY Jos. J. Rokosky

CHECKED BY