

REVISIONS

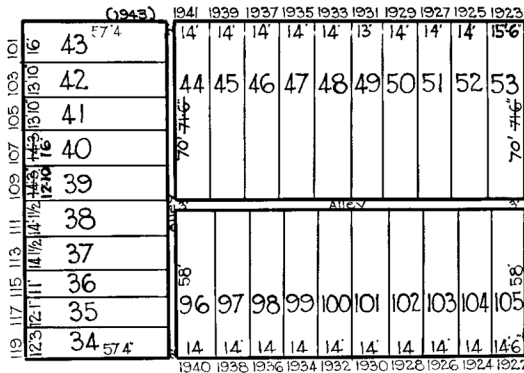
Lots 1 to 5 Cons. Per App. No. 33 1-7-32
 " 39 & 40 Rev. Per Deeds - Field Bauersfield M. Ch. 1474-A
 Lots 13-14 & 88 Cons'd Per App. 533 C. Sh. 1677.
 Lots 16-18 Cons'd per App & D. C. Sh. 3375
 Lots 23 to 27 Dim. Changed Per Deeds C. Sh. 4098A
 Lot 28-29 Cons'd Per Field C. Sh. 9563
 Lot 15 Ho. No. Per Field C. Sh. 9564-A
 Lots 26 & 27 Cons'd. Per. D. C. Sh. 9906
 Lots 23 & 24 Cons'd. Per. D. C. Sh. 9954
 Lot 1 Per. Deed. C. Sh. 432
 Lot 6/8 Per App. C. Sh. 76-153
 Lots 44-53, 75-79, 89-95, 104-115 Dim. Ch. Per Deeds; Ch. Sh. 97-027, 028, 031 & 032

226

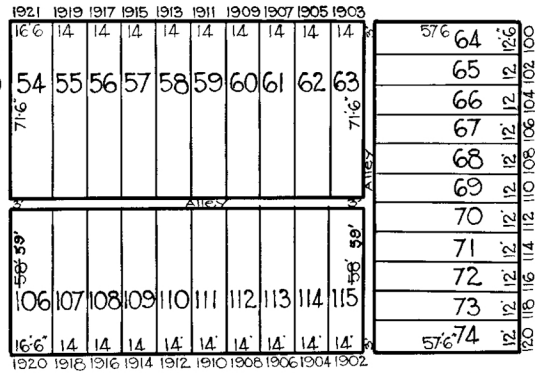
W. LOMBARD

ST.

ST.



ST.



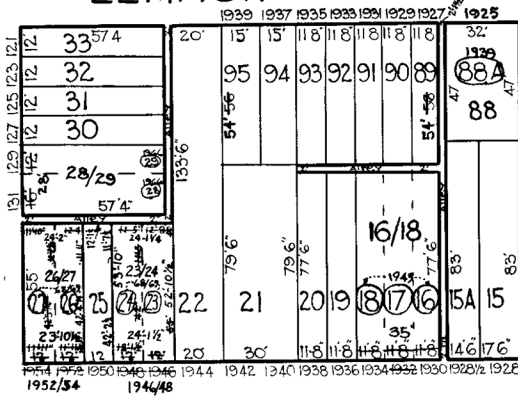
ST.

241

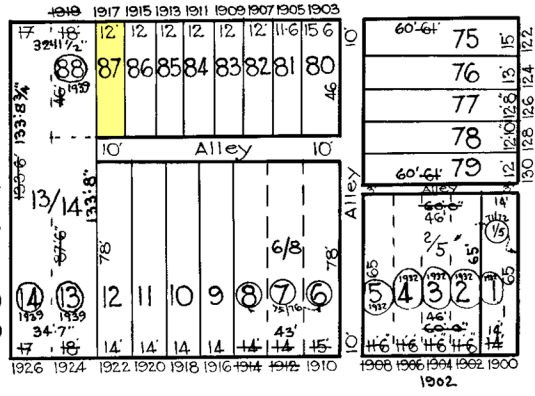
LEMMON

ST.

S. PAYSON



GOLDSMITH



S. MONROE

243

W. PRATT

ST.

259

NOTICE
 THIS IS A REAL PROPERTY PLAT AS PROVIDED FOR UNDER ARTICLE 76(d) OF THE CITY CHARTER IT IS COMPILED FROM TITLE AND OTHER SOURCES AND IS NOT AN AUTHENTIC SURVEY

CITY OF BALTIMORE
 DEPARTMENT OF PUBLIC WORKS
 BUREAU OF SURVEYS
 PROPERTY LOCATION DIVISION
 WARD 20 SECTION 12
 BLOCK 242
 SCALE 1/4" = 50 FT. DATE Nov. 1929

TRACED BY C. H. BAIN
 LETTERED BY Jos. J. Rokosky
 CHECKED BY