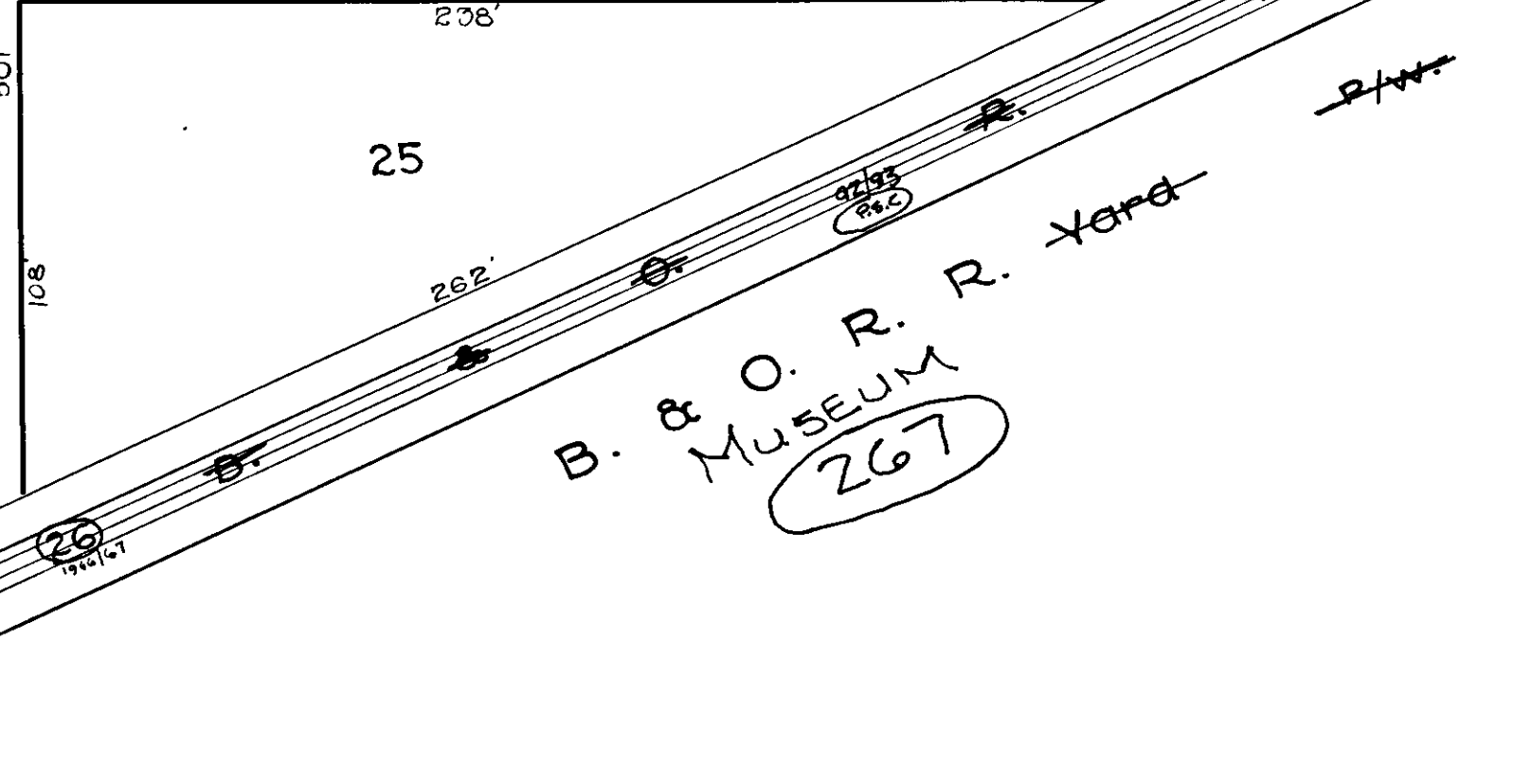
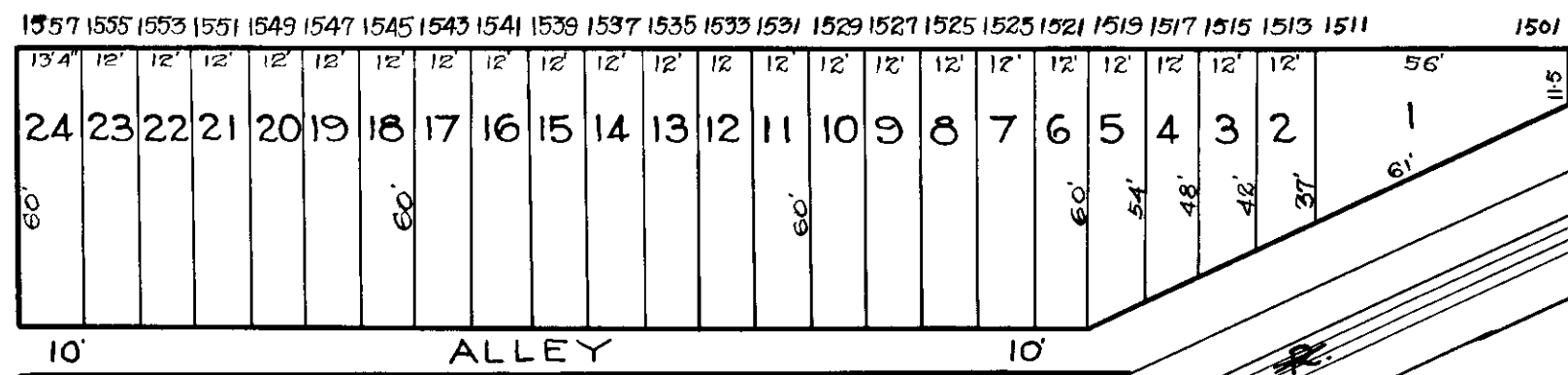


REVISIONS
 Lot 26 Assessed in P.S.C. C. 54. 9626A

S. GILMOR ST.
 COLE ST.
 S. PARRISH ST.
 S. STRICKER ST.



NOTICE
 THIS IS A REAL PROPERTY PLAT AS PROVIDED FOR UNDER ARTICLE 76(h) OF THE CITY CHARTER. IT IS COMPILED FROM TITLE AND OTHER SOURCES AND IS NOT AN AUTHENTIC SURVEY.

CITY OF BALTIMORE
 DEPARTMENT OF PUBLIC WORKS
 BUREAU OF PLANS & SURVEYS
 PROPERTY LOCATION DIVISION
 WARD 19 SECTION 10
 BLOCK 714
 SCALE 1/4" = 40 FT. DATE July 1929

TRACED BY G Moorehead
 LETTERED BY G Moorehead
 Jos J. Rakosky
 CHECKED BY: