

RESUBDIVISION SECTION I  
ARUNDEL VILLAGE  
ANNE ARUNDEL COUNTY, MARYLAND

PLAT BOOK 18 FOLIO 36  
(NO. 737)

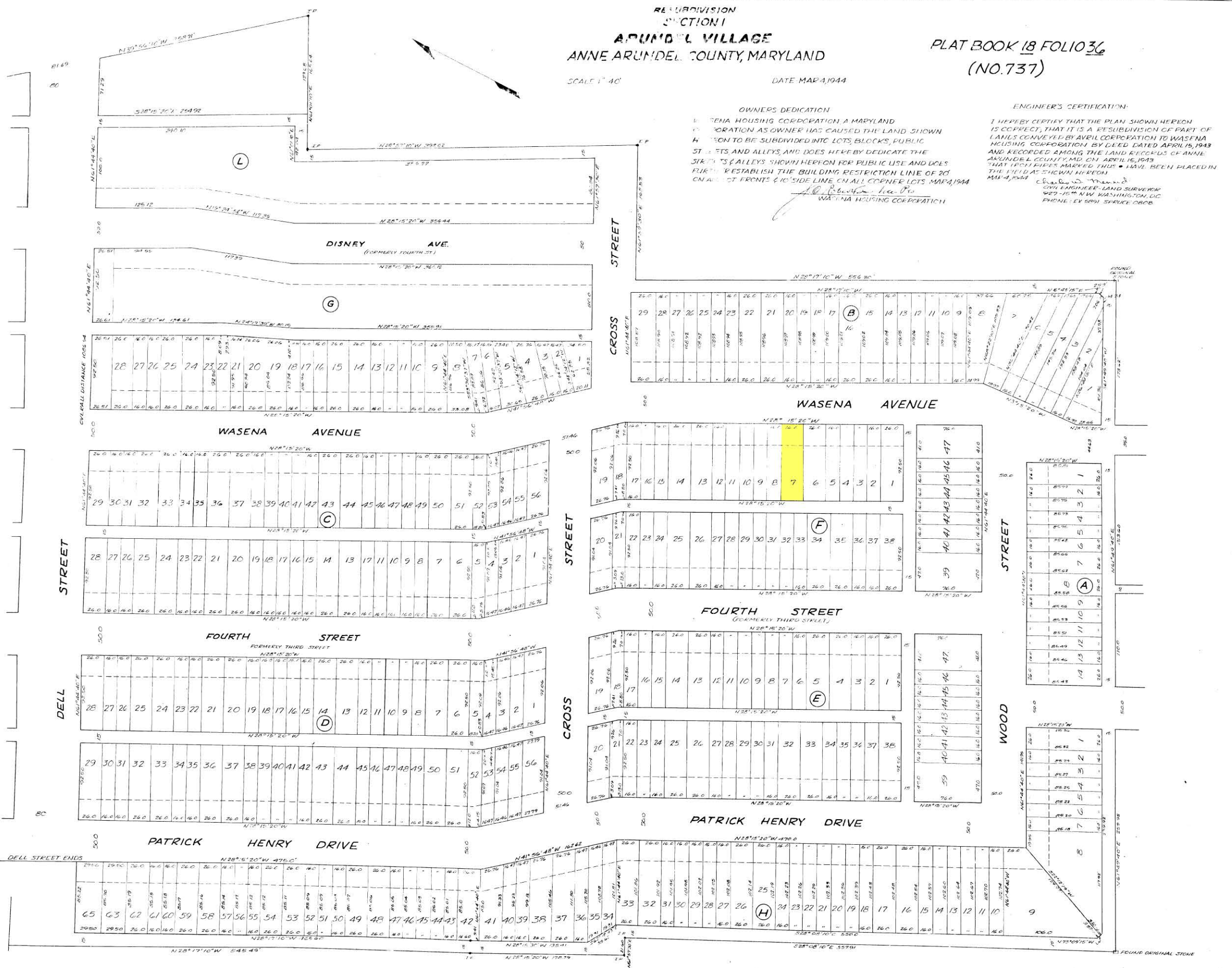
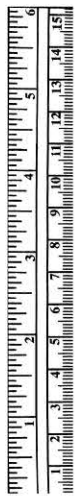
SCALE 1" = 40'

DATE MAR 4, 1944

OWNERS DEDICATION  
WASNA HOUSING CORPORATION, A MARYLAND CORPORATION AS OWNER HAS CAUSED THE LAND SHOWN HEREON TO BE SUBDIVIDED INTO LOTS, BLOCKS, PUBLIC STREETS AND ALLEYS, AND DOES HEREBY DEDICATE THE STREETS & ALLEYS SHOWN HEREON FOR PUBLIC USE AND DOES FURTHER ESTABLISH THE BUILDING RESTRICTION LINE OF 20' ON ALL ST. FRONTS & 10' SIDE LINE ON ALL CORNER LOTS. MAR 4, 1944  
WASNA HOUSING CORPORATION

ENGINEER'S CERTIFICATION:

I HEREBY CERTIFY THAT THE PLAN SHOWN HEREON IS CORRECT, THAT IT IS A RESUBDIVISION OF PART OF LANDS CONVEYED BY AVAIL COOPERATION TO WASNA HOUSING CORPORATION BY DEED DATED APRIL 15, 1943 AND RECORDED AMONG THE LAND RECORDS OF ANNE ARUNDEL COUNTY, MD. ON APRIL 15, 1943 THAT LOTS MARKED THIS PLAN HAVE BEEN PLACED IN THE FIELD AS SHOWN HEREON  
CHARLES W. MERRILL  
CIVIL ENGINEER - LAND SURVEYOR  
3077 16th N.W. WASHINGTON, D.C.  
PHONE: EV 5891 SPURGE 0808



CROSS STREET

DISNEY AVE. (FORMERLY FOURTH ST.)

WASENA AVENUE

DELL STREET

FOURTH STREET (FORMERLY THIRD STREET)

PATRICK HENRY DRIVE

WOOD STREET

(L)

(G)

(C)

(D)

(H)

(B)

(F)

(E)

(A)

(8)

(9)

RE 14-7-14

P 45720