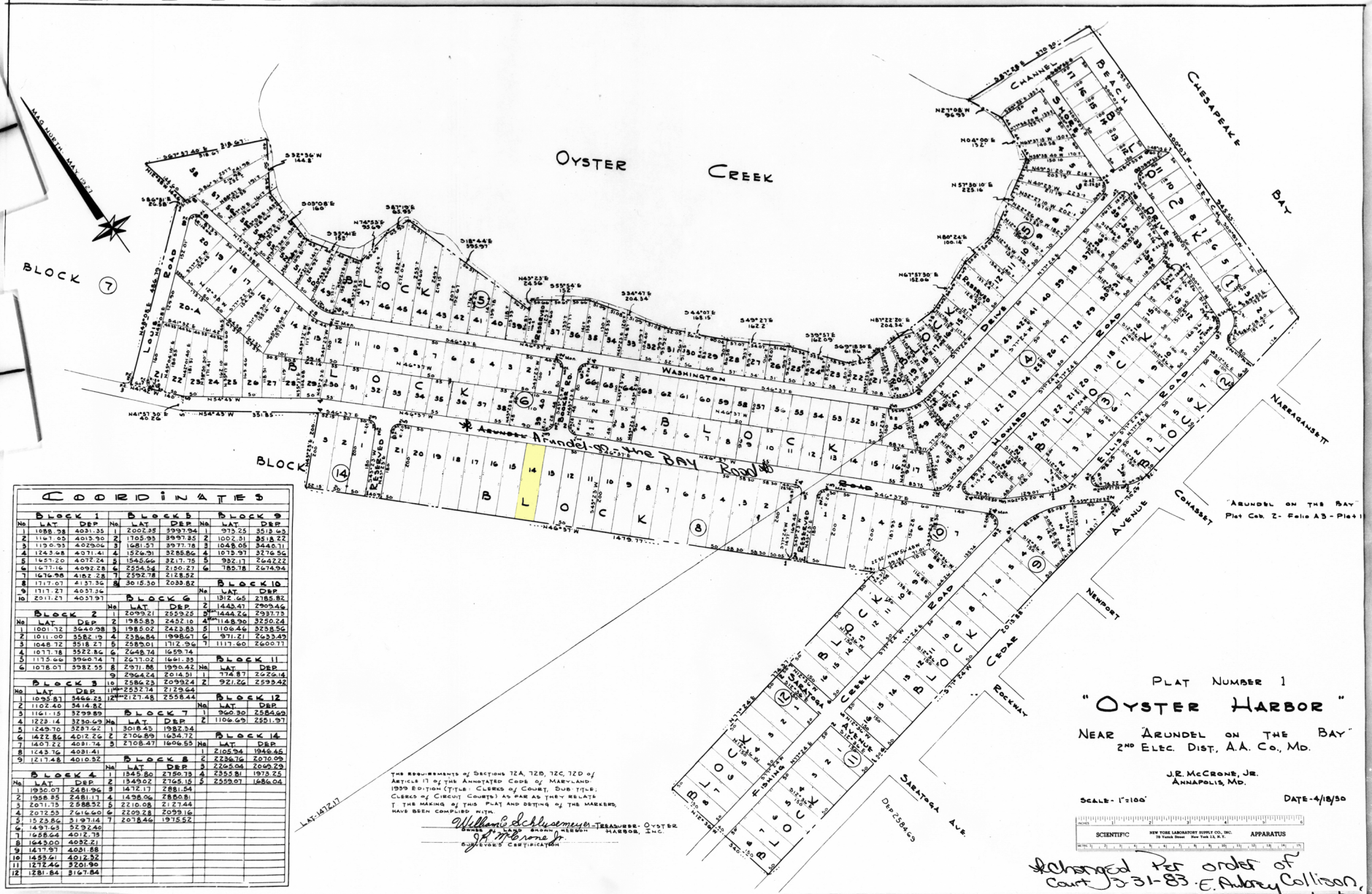


PLAT NO 996, BOOK NO 22 FOLIO 9 FLD 22



COORDINATES											
BLOCK 1			BLOCK 5			BLOCK 9			BLOCK 10		
No.	LAT.	DEP.	No.	LAT.	DEP.	No.	LAT.	DEP.	No.	LAT.	DEP.
1	1088.28	4031.35	1	2002.35	3997.94	1	975.25	3013.63	1	1117.01	4137.36
2	1161.45	4013.30	2	1105.33	3997.85	2	1002.31	3518.22	2	2011.21	4037.36
3	1150.33	4029.06	3	1081.57	3977.78	3	1048.05	3440.71	3	1117.01	4137.36
4	1243.08	4071.41	4	1526.31	3285.86	4	1075.97	3276.56	4	1078.07	3582.53
5	1657.20	4072.24	5	1545.66	3211.79	5	992.11	2042.22	5	1078.07	3582.53
6	1077.16	4092.28	6	2554.54	2150.27	6	185.78	2074.94	6	1078.07	3582.53
7	1616.98	4187.28	7	2592.78	2125.82	7	185.78	2074.94	7	1078.07	3582.53
8	1117.01	4137.36	8	3015.30	1038.82	8	185.78	2074.94	8	1078.07	3582.53
9	1117.01	4037.36	9	2099.21	2552.25	9	1444.26	2937.73	9	1078.07	3582.53
10	2011.21	4037.36	10	1985.83	2452.10	10	1116.83	3250.24	10	1078.07	3582.53
BLOCK 2			BLOCK 6			BLOCK 11			BLOCK 12		
No.	LAT.	DEP.	No.	LAT.	DEP.	No.	LAT.	DEP.	No.	LAT.	DEP.
1	1001.12	3544.98	1	1985.83	2452.10	1	1116.83	3250.24	1	1001.12	3544.98
2	1011.00	3582.10	2	2386.84	1998.67	2	971.21	2632.43	2	1102.40	3414.82
3	1048.72	3518.23	3	2583.01	1717.96	3	1117.00	2600.77	3	1161.15	3299.89
4	1077.18	3522.86	4	2648.74	1655.74	4	1117.00	2600.77	4	1229.14	3230.69
5	1175.06	3960.74	5	2671.02	1661.39	5	1117.00	2600.77	5	1249.70	3287.62
6	1078.07	3582.53	6	2971.86	1930.42	6	1117.00	2600.77	6	1432.86	4012.26
BLOCK 3			BLOCK 7			BLOCK 14			BLOCK 8		
No.	LAT.	DEP.	No.	LAT.	DEP.	No.	LAT.	DEP.	No.	LAT.	DEP.
1	1018.87	3468.24	1	2127.48	2558.44	1	2106.54	1946.66	1	1243.76	4081.41
2	1102.40	3414.82	2	2127.48	2558.44	2	2106.54	1946.66	2	1271.48	4019.35
3	1161.15	3299.89	3	2127.48	2558.44	3	2106.54	1946.66	3	1271.48	4019.35
4	1229.14	3230.69	4	2127.48	2558.44	4	2106.54	1946.66	4	1271.48	4019.35
5	1249.70	3287.62	5	2127.48	2558.44	5	2106.54	1946.66	5	1271.48	4019.35
6	1432.86	4012.26	6	2127.48	2558.44	6	2106.54	1946.66	6	1271.48	4019.35
7	1407.22	4081.41	7	2127.48	2558.44	7	2106.54	1946.66	7	1271.48	4019.35
8	1243.76	4081.41	8	2127.48	2558.44	8	2106.54	1946.66	8	1271.48	4019.35
9	1271.48	4019.35	9	2127.48	2558.44	9	2106.54	1946.66	9	1271.48	4019.35
BLOCK 4			BLOCK 8			BLOCK 12			BLOCK 13		
No.	LAT.	DEP.	No.	LAT.	DEP.	No.	LAT.	DEP.	No.	LAT.	DEP.
1	1930.07	2481.96	1	1845.80	2195.79	1	2255.81	1973.25	1	1930.07	2481.96
2	1958.55	2481.11	2	1845.80	2195.79	2	2255.81	1973.25	2	1958.55	2481.11
3	2011.13	2488.53	3	1845.80	2195.79	3	2255.81	1973.25	3	2011.13	2488.53
4	2072.53	2616.00	4	1845.80	2195.79	4	2255.81	1973.25	4	2072.53	2616.00
5	1543.86	3197.14	5	1845.80	2195.79	5	2255.81	1973.25	5	1543.86	3197.14
6	1457.63	2929.41	6	1845.80	2195.79	6	2255.81	1973.25	6	1457.63	2929.41
7	1458.04	4012.79	7	1845.80	2195.79	7	2255.81	1973.25	7	1458.04	4012.79
8	1642.00	4032.21	8	1845.80	2195.79	8	2255.81	1973.25	8	1642.00	4032.21
9	1477.97	4021.88	9	1845.80	2195.79	9	2255.81	1973.25	9	1477.97	4021.88
10	1459.61	4012.32	10	1845.80	2195.79	10	2255.81	1973.25	10	1459.61	4012.32
11	1273.46	3501.90	11	1845.80	2195.79	11	2255.81	1973.25	11	1273.46	3501.90
12	1281.84	3167.84	12	1845.80	2195.79	12	2255.81	1973.25	12	1281.84	3167.84

THE REQUIREMENTS OF SECTIONS 72A, 72B, 72C, 72D OF ARTICLE 11 OF THE ANNOTATED CODE OF MARYLAND, 1959 EDITION (TITLE: CLERKS OF COURT, DUTY TITLE: CLERK OF CIRCUIT COURT) AS FAR AS THEY RELATE TO THE MAKING OF THIS PLAT AND SETTING OF THE MARKERS, HAVE BEEN COMPLIED WITH.

William J. McCreone, Jr.
J. McCreone Jr.
 SURVEYOR'S CERTIFICATION

TREASURER, OYSTER HARBOR, INC.

PLAT NUMBER 1
 "OYSTER HARBOR"
 NEAR ARUNDEL ON THE BAY
 2ND Elec. DIST. A.A. Co., MD.

J.R. McCreone, Jr.
 ANNAPOLIS, MD.

SCALE - 1"=100'
 DATE - 4/18/50

SCIENTIFIC APPARATUS

Obtained per order of
 Court D-31-83 E. Aubrey Collison,
 clerk

P.211933

M9A 31235-4516

