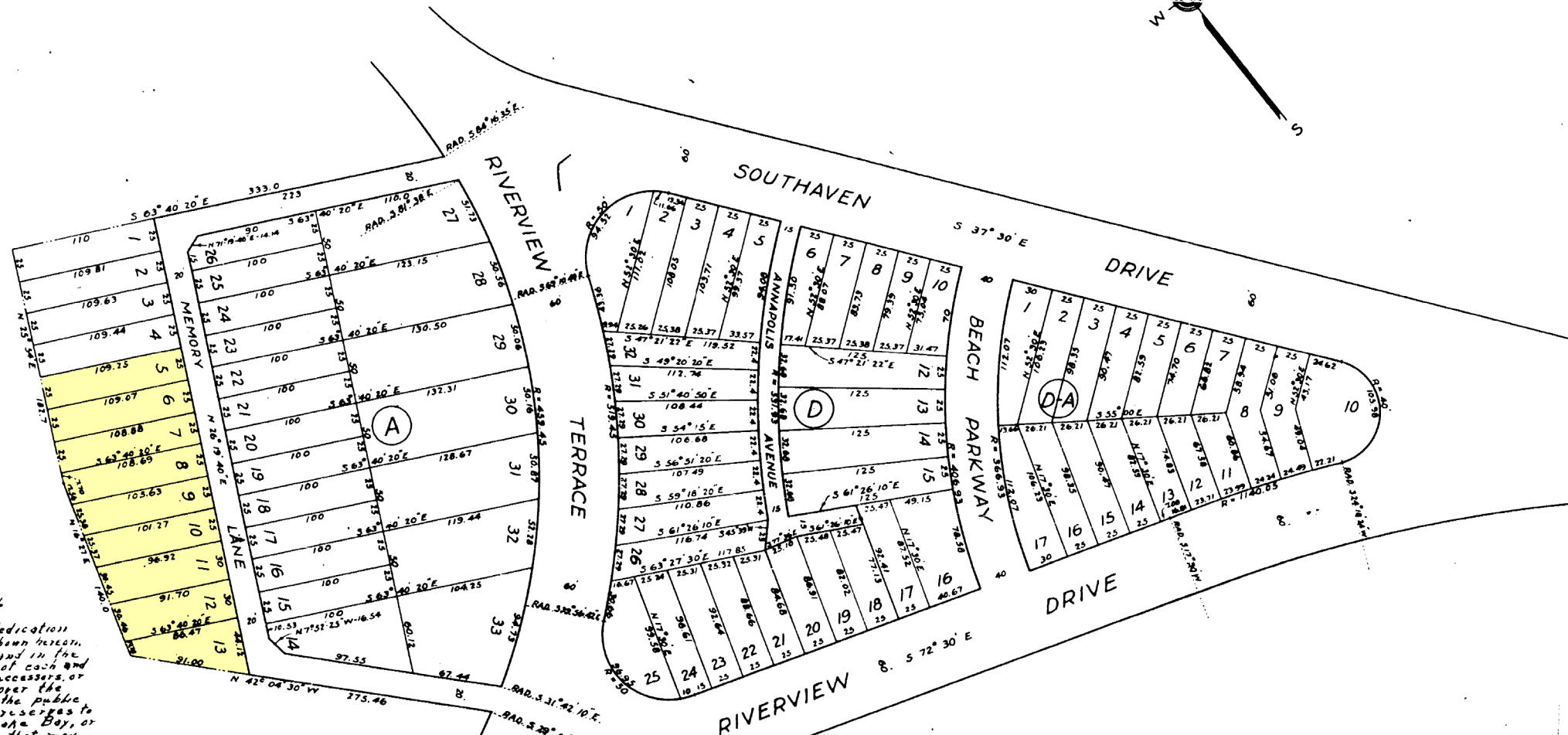
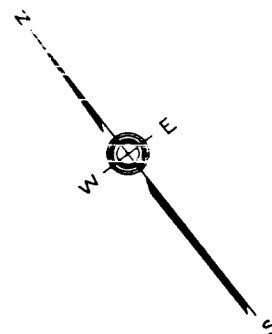


RESUBDIVISION OF
ORIGINAL LOTS 40, 41, 43, 44 & 45
SECTION ONE
SOUTHAVEN
ON THE SOUTH RIVER
ANNE ARUNDEL COUNTY
MARYLAND

DEPT. 1937 JOSEPH N. STARKEY
SCALE: 1"=50' CIVIL ENGINEER
SILVER SPRING, MD.



See Deed of Restrictions Liber PAM no. 159 folio 36

The filing of this Plat shall not constitute a public dedication of the streets, avenues, parkways, or other reservations shown hereon, the owner expressly reserving to itself the title to the land in the same. But the said owner hereby grants to the purchaser of each and every lot or parcel shown hereon, or part thereof, the heirs, successors, or assigns of each, a right of way by the most direct route over the streets, avenues and parkways shown hereon, to and from the public highways adjacent to the property. The owner expressly reserves to itself all riparian rights along the shores of the Chesapeake Bay, or its tributaries appurtenant to the property at this date, or that may hereafter accrue.

The owner reserves to itself, its successors or assigns, the exclusive right to locate, construct, operate and maintain the various public utilities and appurtenances thereof, in, along, over, across and under the streets, avenues, parkways, or other reservations shown hereon, within the lines of this subdivision.

NOTE

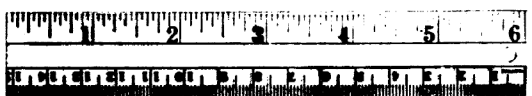
All distances shown on curves are arc measurements and the lot lines of curves are radial unless the bearings are shown.

ENGINEER'S CERTIFICATE

This is to certify that the lines and boundaries of this subdivision do not conflict with any other subdivision or tract and that due care has been taken in the measurement of all lines and angles and that said lines are as shown on the plat.

Sept. 23, 1937

Joseph N. Starkey
Civil Engineer



CABINET No. 1
ROD No. A 7
PLAT No. 3
Anne Arundel Co.