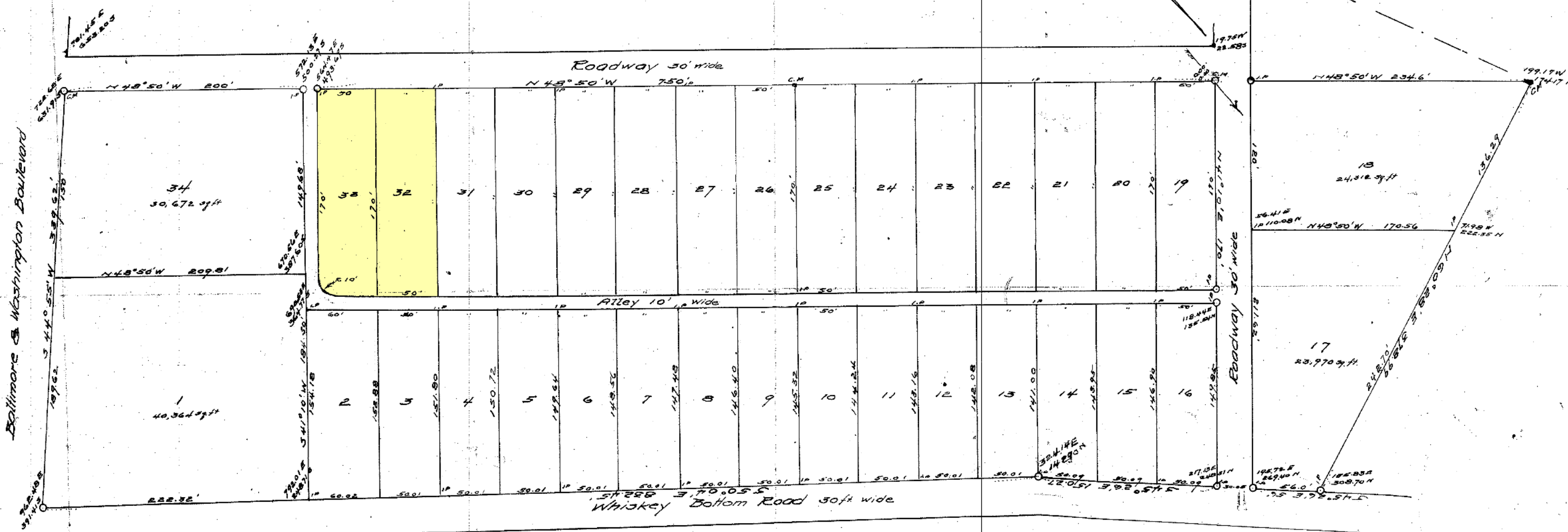


Plan of the "Watson Development"

Laurel, Howard County, Md.

Sixth District

Aug 1947 Scale 1"=50'



The requirements of Sections 72A, 72B & 72C of Article 17 of the Annotated Code of Maryland, as far as they relate to the making of this plat, and the setting of markers, have been complied with.

W. M. Watson owner of land

J. H. Austin  
Professional Engineer  
and Land Surveyor  
Ellicott City, Md.