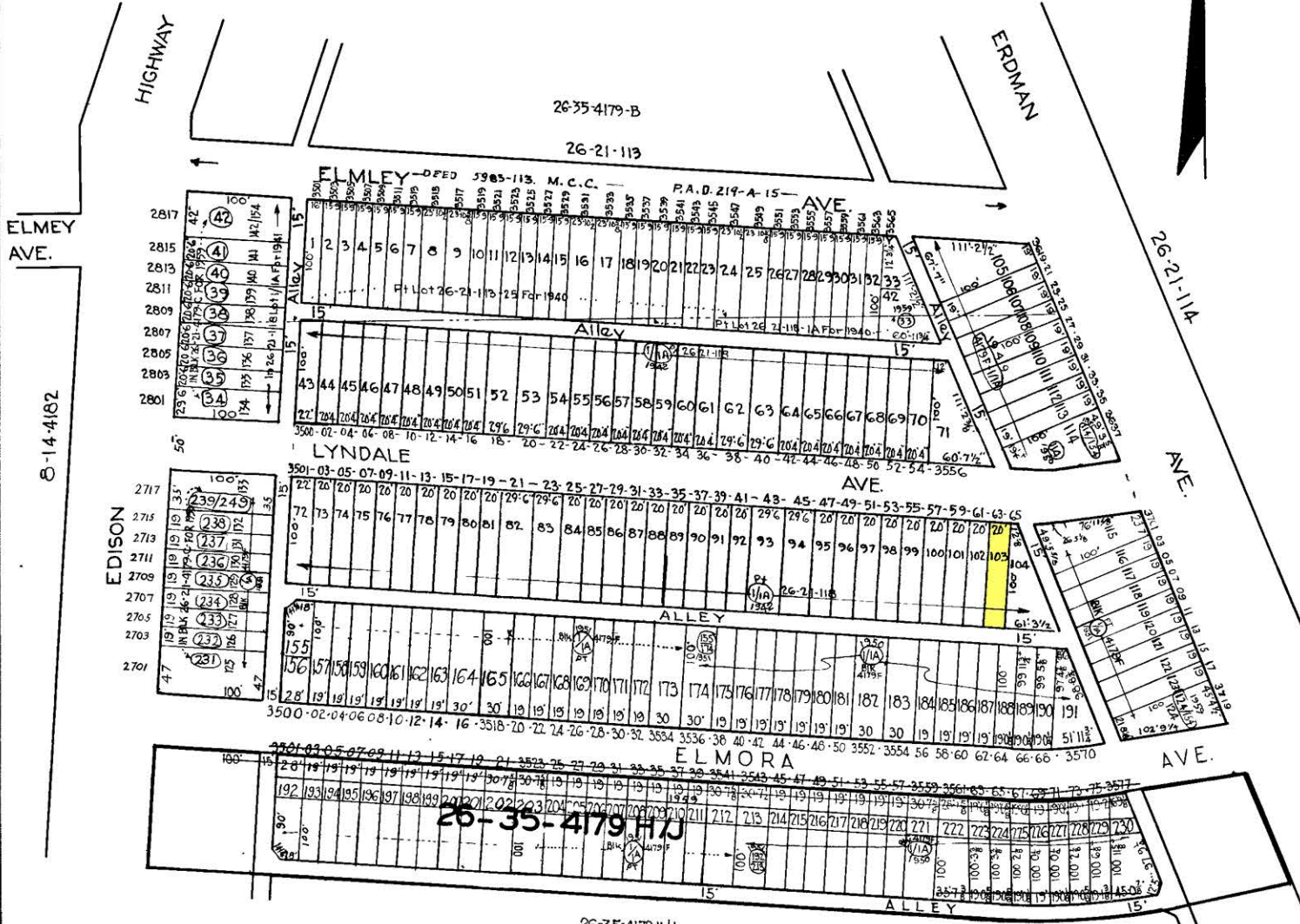


**REVISIONS**

Lots 1 to 33 Per App 1100/G5 C.Sh 2005/06  
 Lots 34 to 42 Per App 530/547 C.Sh. 2238  
 Lots 43 to 104 Per Apps. 6179/6244 & 6339/6396 C.Sh. 2448-49-50  
 Lots 105 to 114 Per App 1208 C.Sh 4655  
 Lots 155/174 to 230 per Apps. 1, 2, 565, 566, C.Shs. 5114-15  
 Lots 155/65-173 & 192/205-212 Per Apps 2078, 9 C.Sh 5165  
 Lots 155 to 165 & 192 to 203 Per Apps. 2402-03 C.Sh. 5273  
 Lots 115 to 124 Per App C.Sh 5484  
 Lots 231 to 239 Per App C.Sh 5485  
 Lots 1 to 191, SET CHANGED PER PL D. C.S.N. 8053



**NOTICE**

THIS IS A REAL PROPERTY PLAT AS PROVIDED FOR UNDER ARTICLE 76(d) OF THE CITY CHARTER IT IS COMPILED FROM TITLE AND OTHER SOURCES AND IS NOT AN AUTHENTIC SURVEY

NOTE ÷ BLOCK 26-21-113A FOR 1941

Note ÷ 26-21-4179C For 1959 Lots 124/154 ETC.

**4179-C**

CITY OF BALTIMORE  
 DEPARTMENT OF PUBLIC WORKS  
 BUREAU OF PLANS & SURVEYS  
 PROPERTY LOCATION DIVISION

WARD 26 SECTION 35  
 BLOCK 4179-C

SCALE 1" = 100' DATE JUN 9 1940

TRACED BY *F. Patterson*

LETTERED BY \_\_\_\_\_

CHECKED BY \_\_\_\_\_