

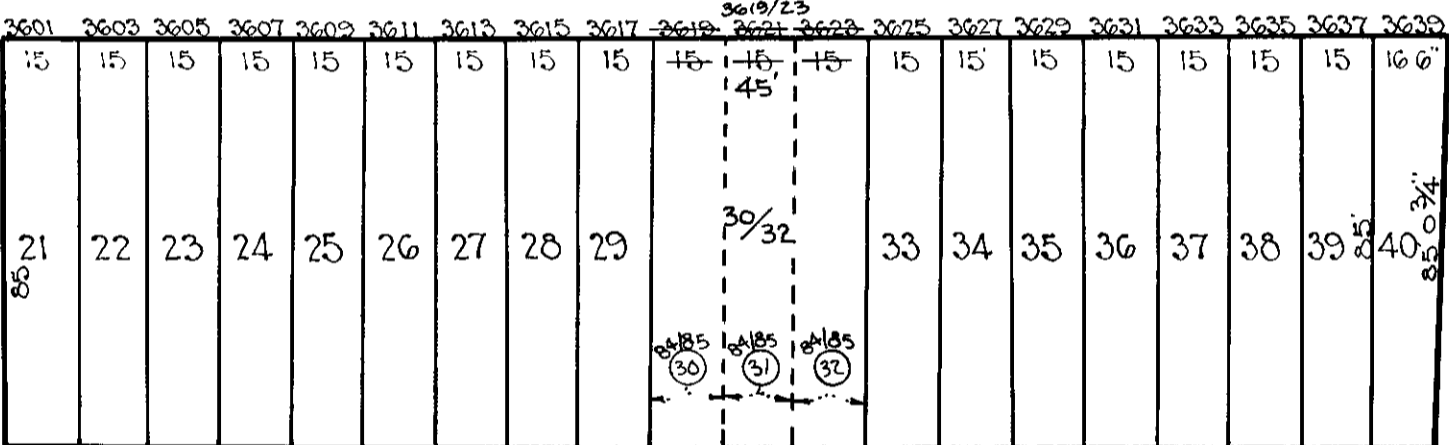
REVISIONS
LOT 30,31,32 COND'S PER. O.O.C.S. 85-118



26-19-13

ROBERTS PLACE

ST.

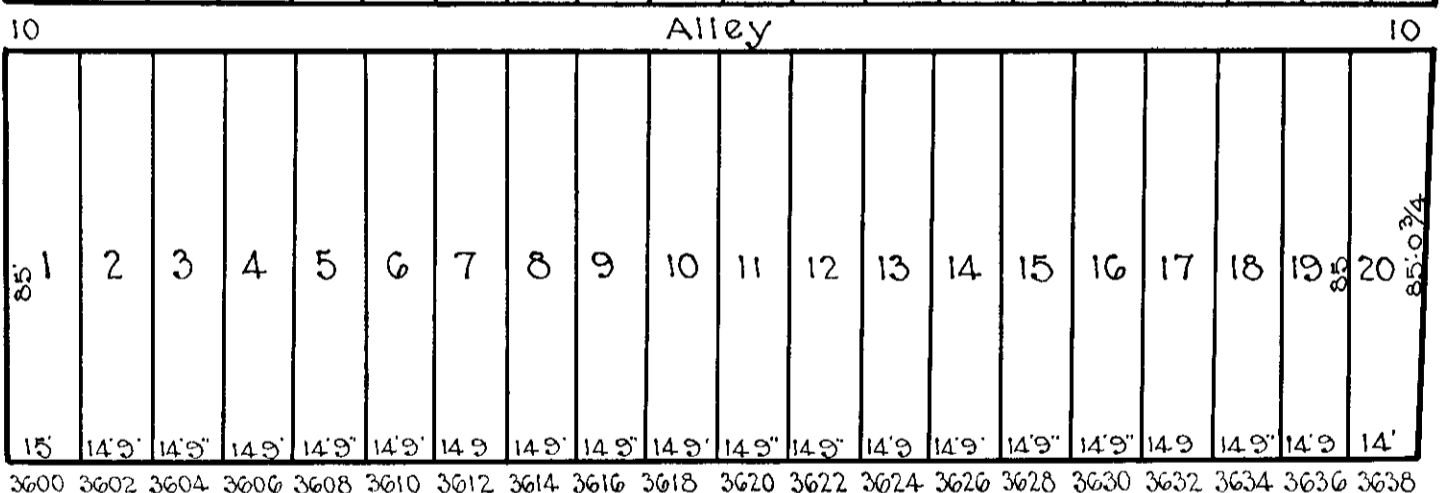


ST.

26-19-12

8'

N. CONKLING



10

N. DEAN

26-19-14/15

E. FAYETTE ST.

70'

26-19-10

NOTICE
THIS IS A REAL PROPERTY PLAT AS PROVIDED FOR UNDER ARTICLE 76(f) OF THE CITY CHARTER. IT IS COMPILED FROM TITLE AND OTHER SOURCES AND IS NOT AN AUTHENTIC SURVEY.

TRACED BY M. C. SJUMPF.
LETTERED BY W. M. L.
CHECKED BY

NOTE - Block 26-19-11 For 1941.

6269
CITY OF BALTIMORE
DEPARTMENT OF PUBLIC WORKS
BUREAU OF PLANS & SURVEYS
PROPERTY LOCATION DIVISION
WARD 26 SECTION 19
BLOCK 6269-A
SCALE 1" = 40' 0" DATE April, 1931