

REVISIONS

Lot 19/23 Per App #1819 Ch.Sh# 668 11-16-32
 Lots 19/23 & 24 Cons Per App 2597 C.Sh 1778.

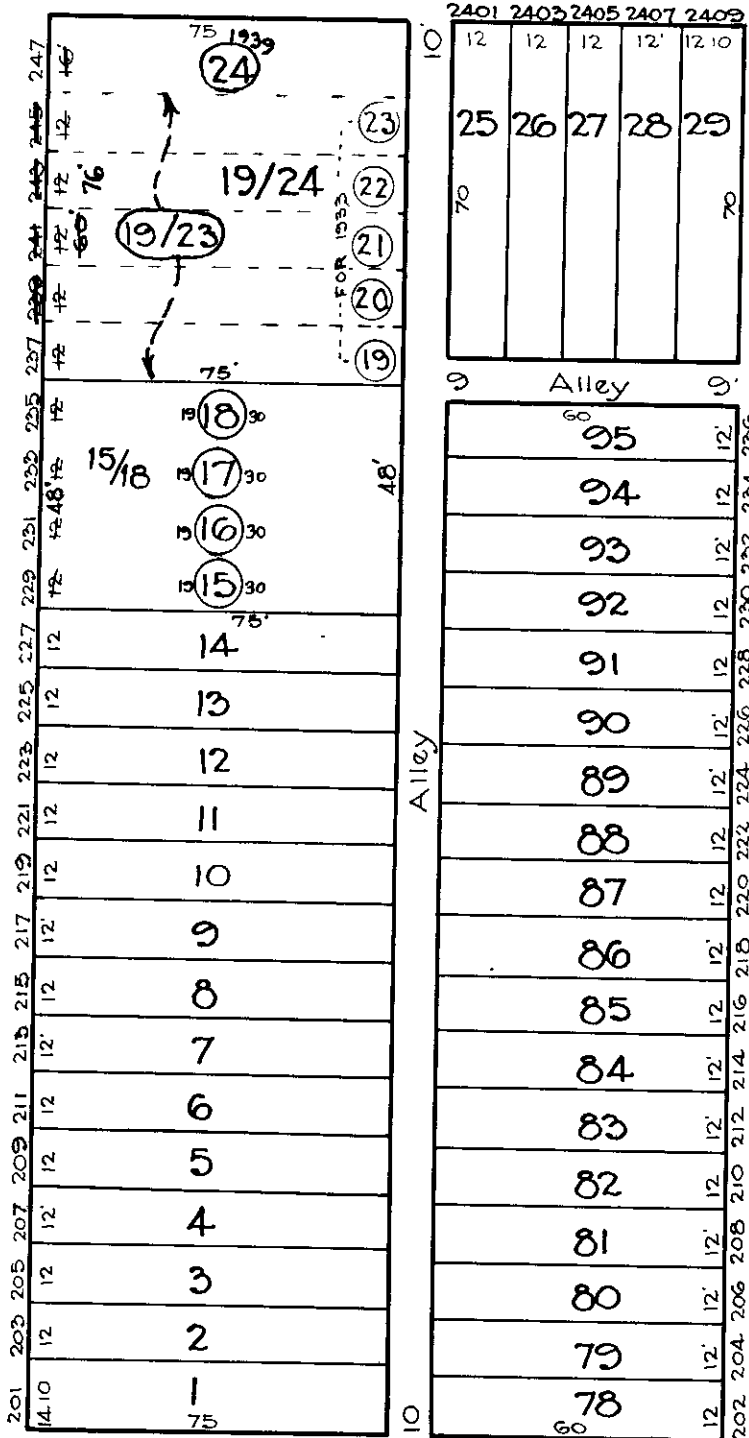
G-3-1672

G-3-1672

ORLEANS

ST.

AVE.



ST.

AVE.

N. MONTFORD

N. PORT

N. MILTON

E. FAYETTE

ST.

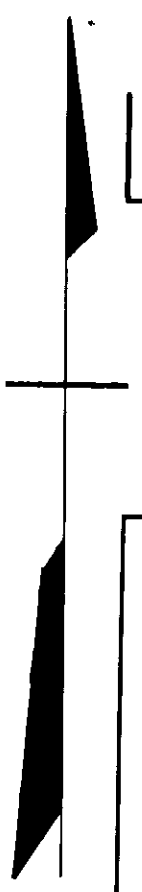
G-14-1708

G-14-1708

R. LITZ
 TRACED BY C. GILBERT
 LETTERED BY W. M. LEE
 CHECKED BY W. M. LEE
 R. LITZ - BAIN

NOTICE
 THIS IS A REAL PROPERTY PLAT AS PROVIDED FOR UNDER ARTICLE 73 OF THE CITY CHARTER. IT IS COMPILED FROM TITLE AND RECORD SOURCES AND IS NOT AN AUTHENTIC SURVEY.

CITY OF BALTIMORE
 DEPARTMENT OF PUBLIC WORKS
 BUREAU OF PLANS & SURVEYS
 PROPERTY LOCATION DIVISION
 WARD 6 SECTION 3
 BLOCK 1690
 SCALE 1" = 40'-0" DATE April 1929



G-3-1691