

REVISIONS.
Dim. Lots, 15-21 per Field C.S. 1429A.
LOT 49 PER App. C.S. 1109

~~138~~
NOW BED OF I-170

W. MULBERRY ST.

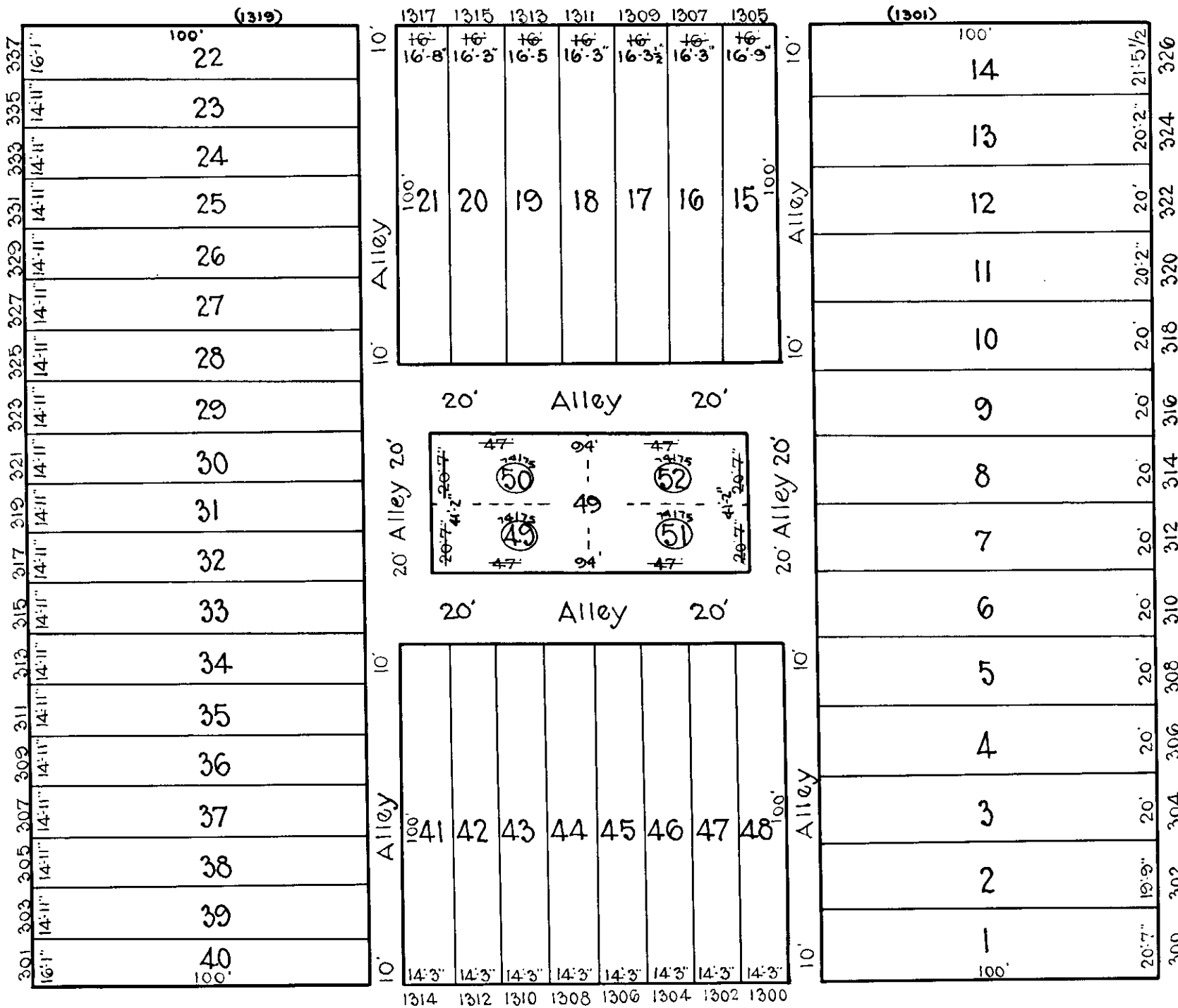
ST.

ST.

N. CALHOUN

ST.

N. CAREY



152

154

W. SARATOGA ST.

ST.

168

TRACED BY Geo. Moorehead
LETTERED BY W. M. Lee
CHECKED BY

NOTICE
THIS IS A REAL PROPERTY PLAT AS PROVIDED FOR UNDER ARTICLE 76(d) OF THE CITY CHARTER. IT IS COMPILED FROM TITLE AND OTHER SOURCES AND IS NOT AN AUTHENTIC SURVEY.

CITY OF BALTIMORE
DEPARTMENT OF PUBLIC WORKS
BUREAU OF SURVEYS
PROPERTY LOCATION DIVISION
WARD 19 SECTION 1
BLOCK 153
SCALE 1" = 40' 0" DATE Oct. 1929.