

**"REVISIONS"**

Block Revised For 1939-C. Sh. 1558 B/F  
 Lots 13 & 14 Cons'd Per App. 1210 C Sh. 4655  
 LOTS 27 & 28 PER. C. SH. 768  
 Lot 16/18 PER O.O.; C. SH. 77-172.  
 LOT 1-9, 7-14, 16-23, 29-41, 46-51, 53-68, 70-73, 78-87, 89, 91-95, & 97-102 DIM CHANGE C SH 79-010-019  
 LOTS 45, 93, 107, 103 & PT OF ST. BED CONDS PER. APP C. SH. 81-278  
 LOTS 78 & 79 CONS'D PER O.O. C. SH. 00-035

236

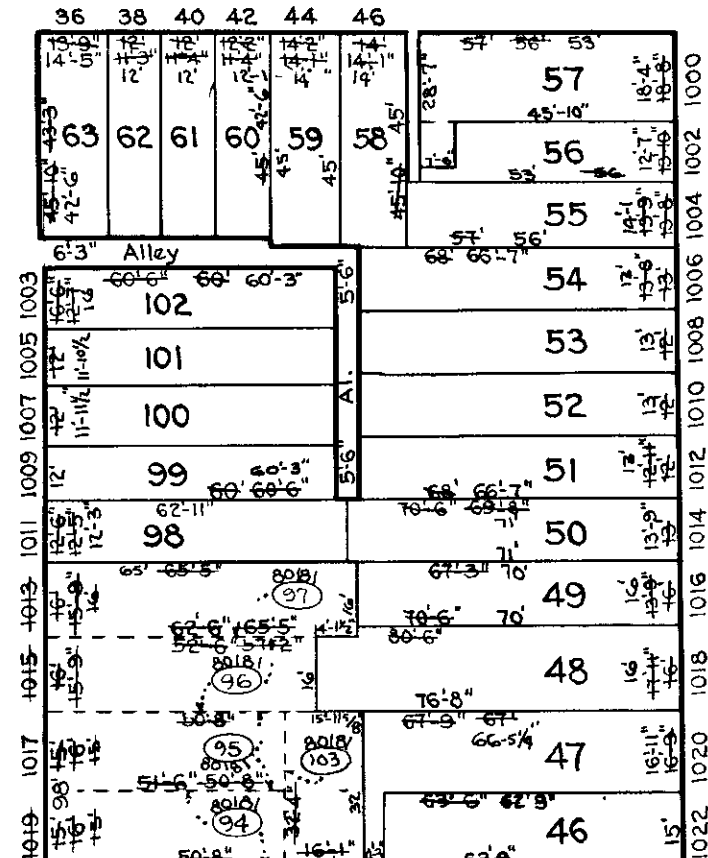
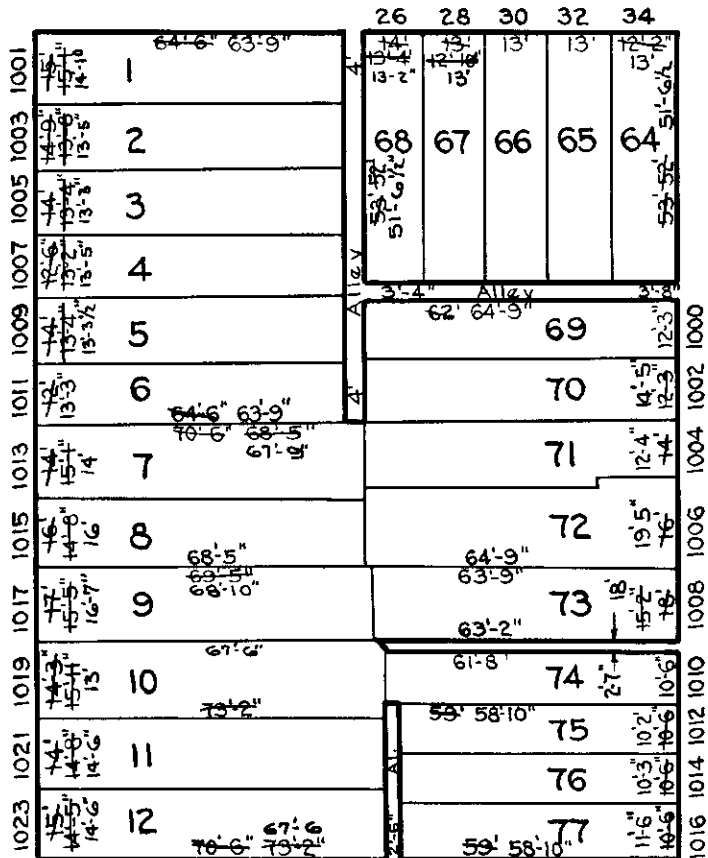
S. SCHROEDER

ST.

ST.

ST.

ST.

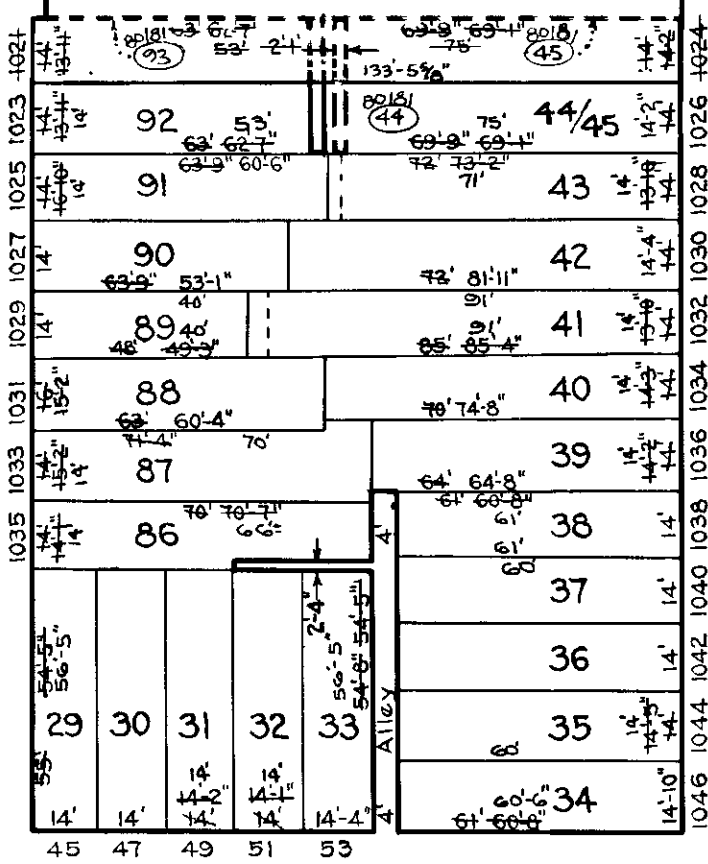
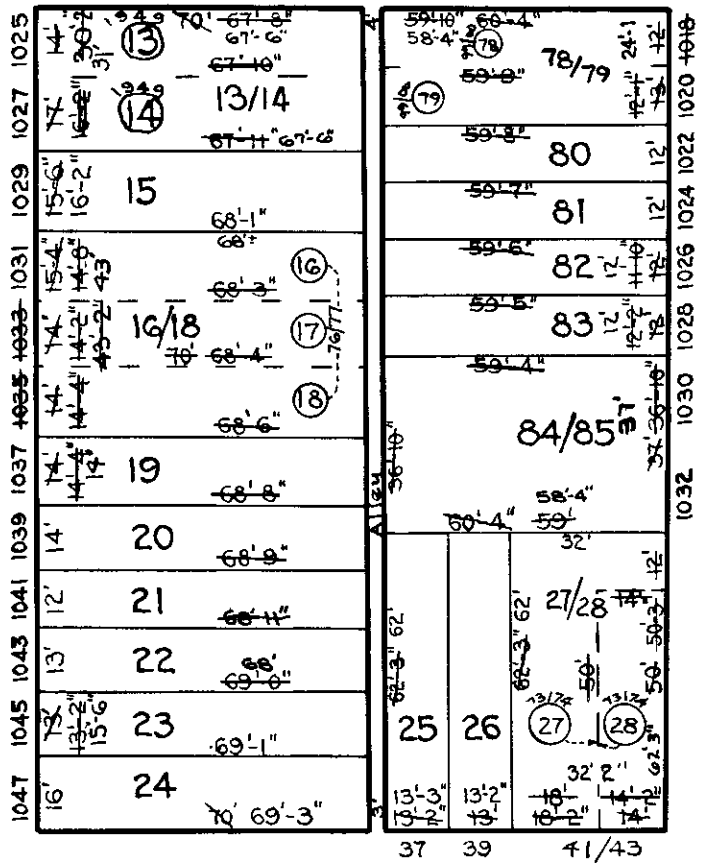


MT. CLARE ST.

HOLLINS

BOYD

W. LOMBARD



S. ARLINGTON

AVE.

234

▲ STREET CLOSED PER ORD

**NOTICE**

**THIS IS A REAL PROPERTY PLAT AS PROVIDED FOR UNDER ARTICLE 76(d) OF THE CITY CHARTER IT IS COMPILED FROM TITLE AND OTHER SOURCES AND IS NOT AN AUTHENTIC SURVEY.**

CITY OF BALTIMORE  
 DEPARTMENT OF PUBLIC WORKS  
 BUREAU OF SURVEYS  
 PROPERTY LOCATION DIVISION

WARD 18 SECTION 6  
 BLOCK 235

SCALE 1 INCH = 40 FT. DATE May 1938

TRACED BY A. Zovetz  
 LETTERED BY A. Zovetz  
 CHECKED BY

251

218