

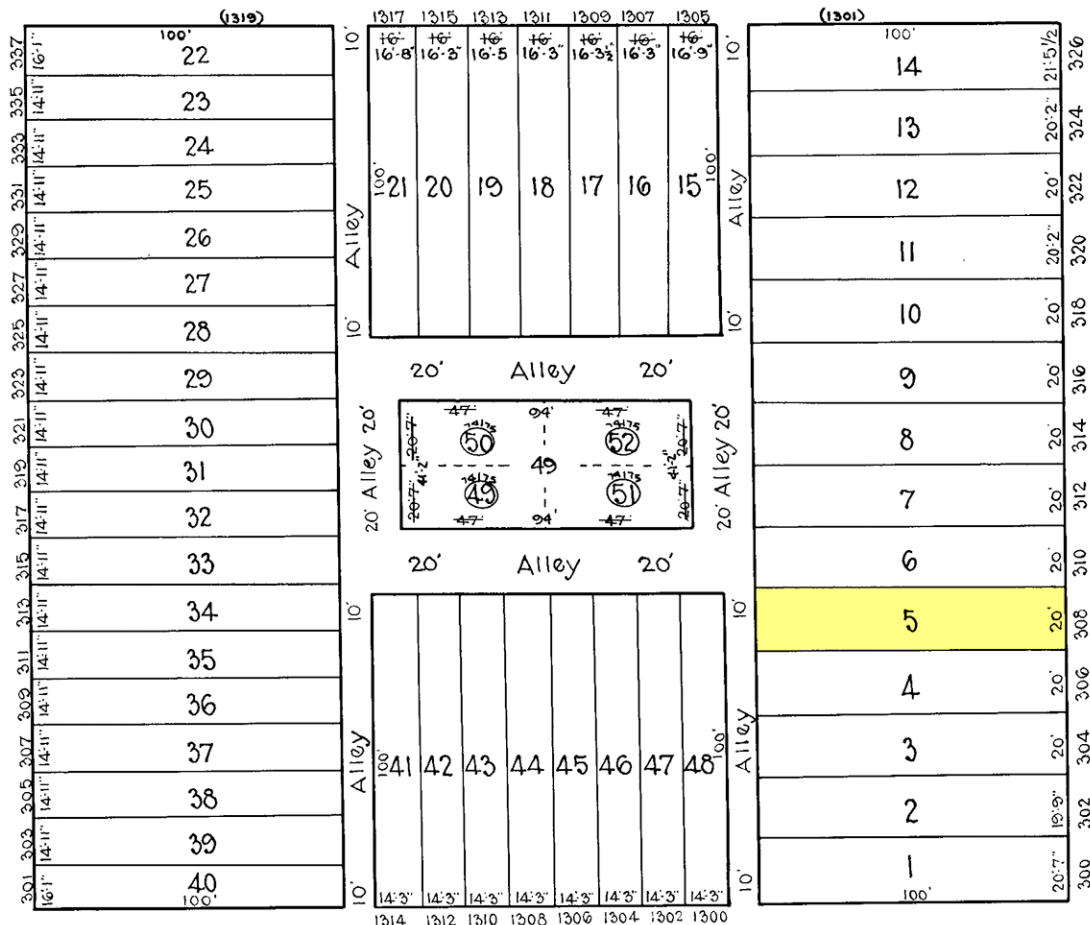
~~138~~
 NOW BED OF I-170

W. MULBERRY ST.

ST.

ST.

ST.



152

154

W. SARATOGA ST.

ST.

168

TRACED BY Geo. Moorehead
 LETTERED BY W. M. L. G.
 CHECKED BY

NOTICE

THIS IS A REAL PROPERTY PLAT AS PROVIDED FOR UNDER ARTICLE 76(d) OF THE CITY CHARTER. IT IS COMPILED FROM TITLE AND OTHER SOURCES AND IS NOT AN AUTHENTIC SURVEY.

CITY OF BALTIMORE
 DEPARTMENT OF PUBLIC WORKS
 BUREAU OF SURVEYS
 PROPERTY LOCATION DIVISION

WARD 19 SECTION 1
 BLOCK 153

SCALE 1" = 40'-0" DATE Oct. 1929.