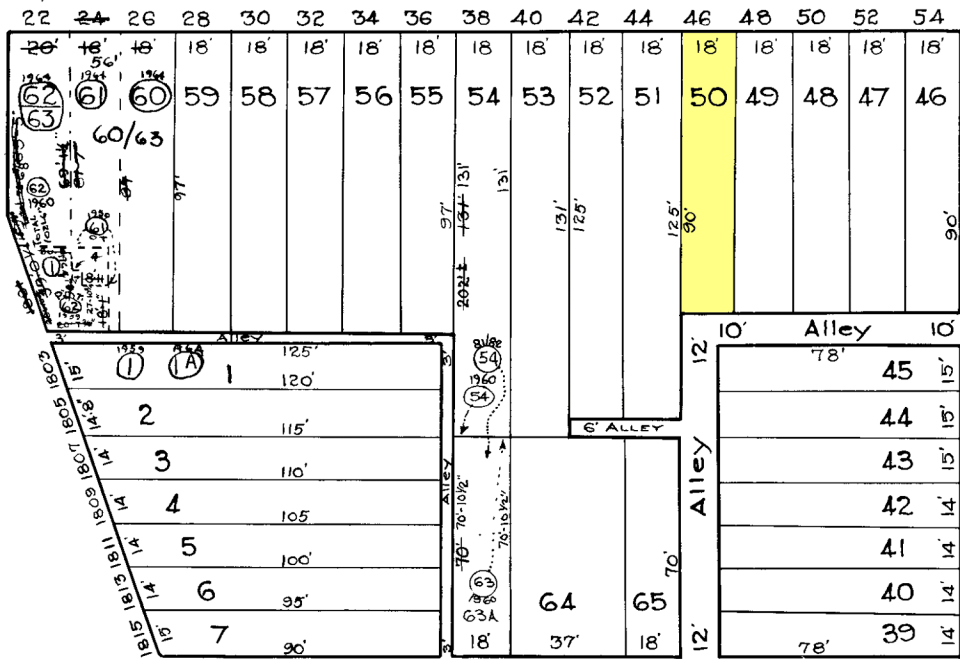


S. FULTON

AVE.



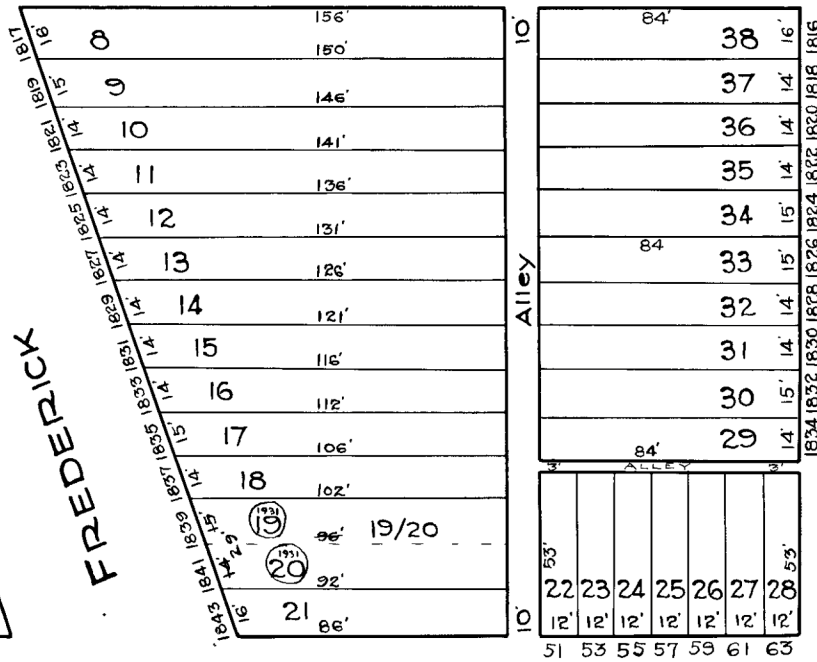
ST.

AVE.

ST.

S. ADDISON

ST.



HOLLINS

W. LOMBARD

S. MONROE

ST.

208

243

224

~ REVISIONS. ~

Part of lot 61 & 62 Cons'd Per Deed C. Sh. 8077.
 Lots 54 & 65 Cons'd Per D. C. Sh. 8331.
 Lots 60 to 63 & 1 Cons'd Per App C. Sh. 9225.
 Lots 64 & 65, Des. Ch. Per P.L.S. C. Sh. 301A.
 Lots 54 & 63A Per Deed & Sub-Div. C. Sh. 82-138

NOTICE

THIS IS A REAL PROPERTY PLAT AS PROVIDED FOR UNDER ARTICLE 70(b) OF THE CITY CHARTER. IT IS COMPILED FROM TITLE AND OTHER SOURCES AND IS NOT AN AUTHENTIC SURVEY.

226

TRACED BY G Moorehead

LETTERED BY G Moorehead Jos. Rokosky

CHECKED BY

CITY OF BALTIMORE
 DEPARTMENT OF PUBLIC WORKS
 BUREAU OF SURVEYS
 PROPERTY LOCATION DIVISION

WARD 19 SECTION 7
 BLOCK 227

SCALE 1/4" = 40 FT. DATE July 1929