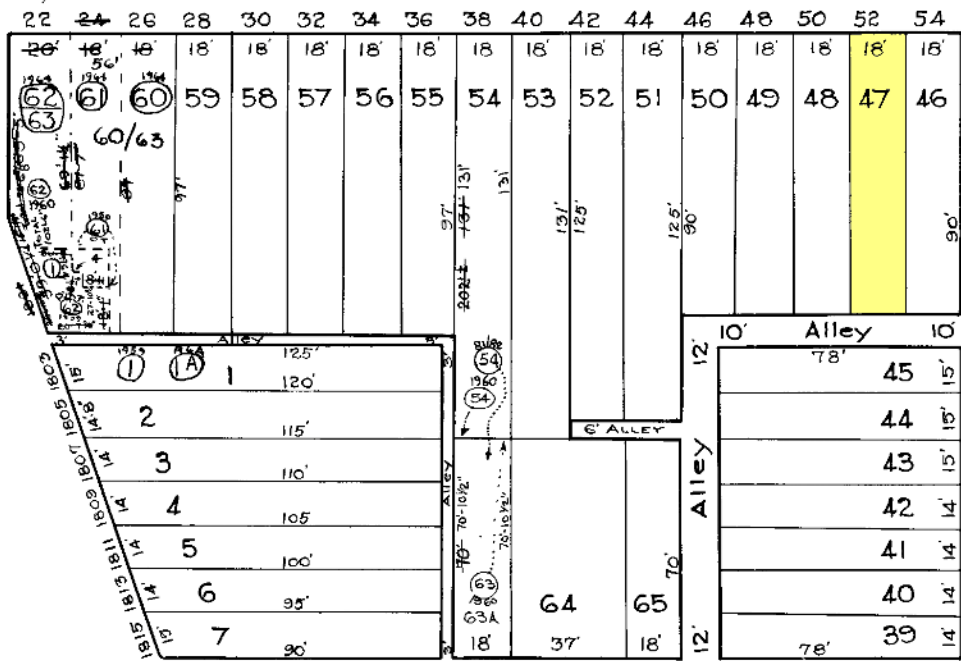


S. FULTON

AVE.

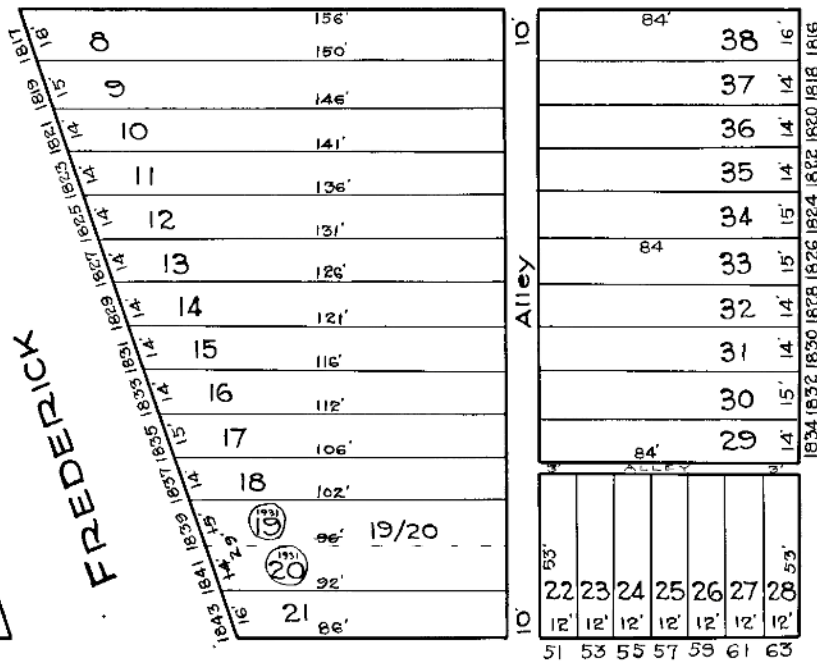


ST.

AVE.

S. ADDISON

ST.



ST.

HOLLINS

FREDERICK

W. LOMBARD

S. MONROE

ST.

224

~ REVISIONS. ~

Part of lot 61 & 62 Cons'd Per Deed C. Sh. 8077.
 Lots 54 & 63 Con'g'd. Per. D. C. Sh. 8331.
 Lots 60 to 63 of 1 Con'do Per App. C. Sh. 9225.
 Lots 64 & 65, Dis. Ch. Per. P.L.S. C. Sh. 301A.
 Lots 54 & 63 A Per. Deed & Sub-Div. C. Sh. 82-138

NOTICE

THIS IS A REAL PROPERTY PLAT AS PROVIDED FOR UNDER ARTICLE 70(b) OF THE CITY CHARTER. IT IS COMPILED FROM TITLE AND OTHER SOURCES AND IS NOT AN AUTHENTIC SURVEY.

226

CITY OF BALTIMORE
 DEPARTMENT OF PUBLIC WORKS
 BUREAU OF SURVEYS
 PROPERTY LOCATION DIVISION

WARD 19 SECTION 7
 BLOCK 227

SCALE 1 INCH = 40 FT. DATE July 1929

TRACED BY G Moorehead

LETTERED BY G Moorehead

CHECKED BY