

REVISIONS  
 Lot 7/8 per App. N° 866/67 Dated 5-14-32 C.Sh 608 Also App. 1070  
 Lots 42 & 43 CONS'D PER O.O. C.SH 06-332

N. NORRIS ST.

197

W. BALTIMORE ST.

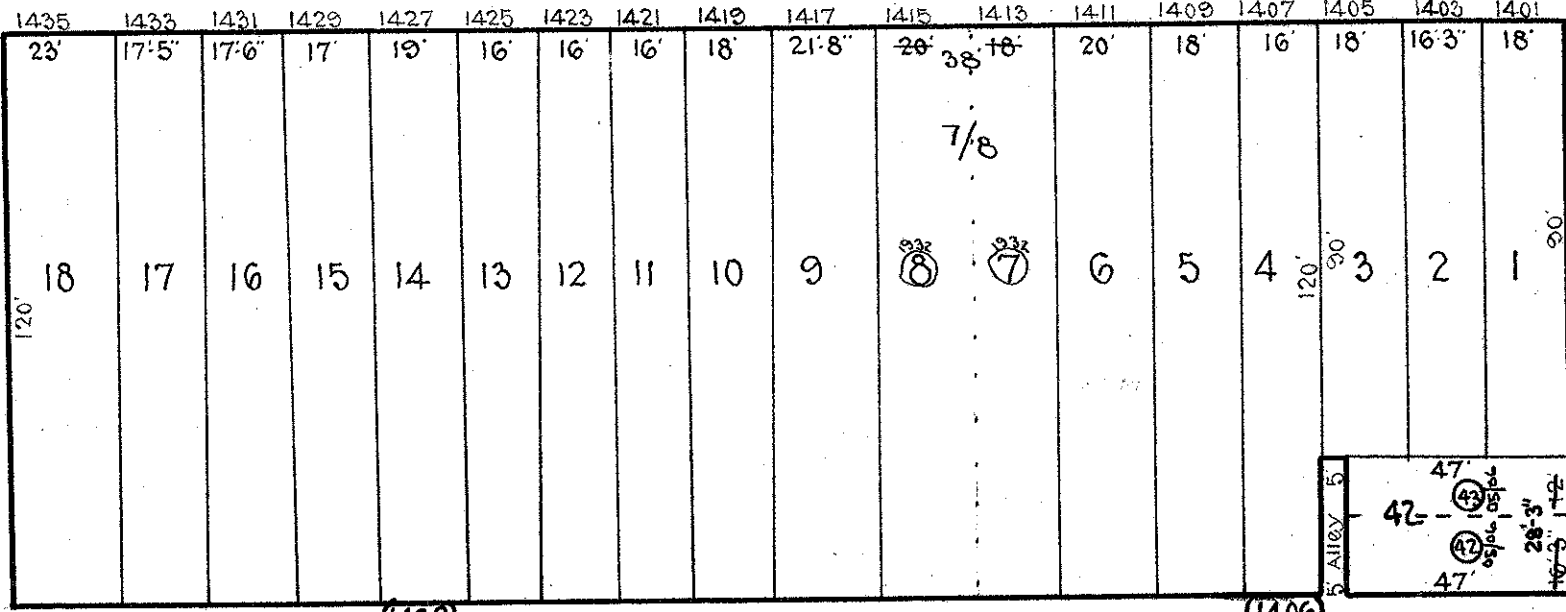
ST.

ST.

ST.

213

215

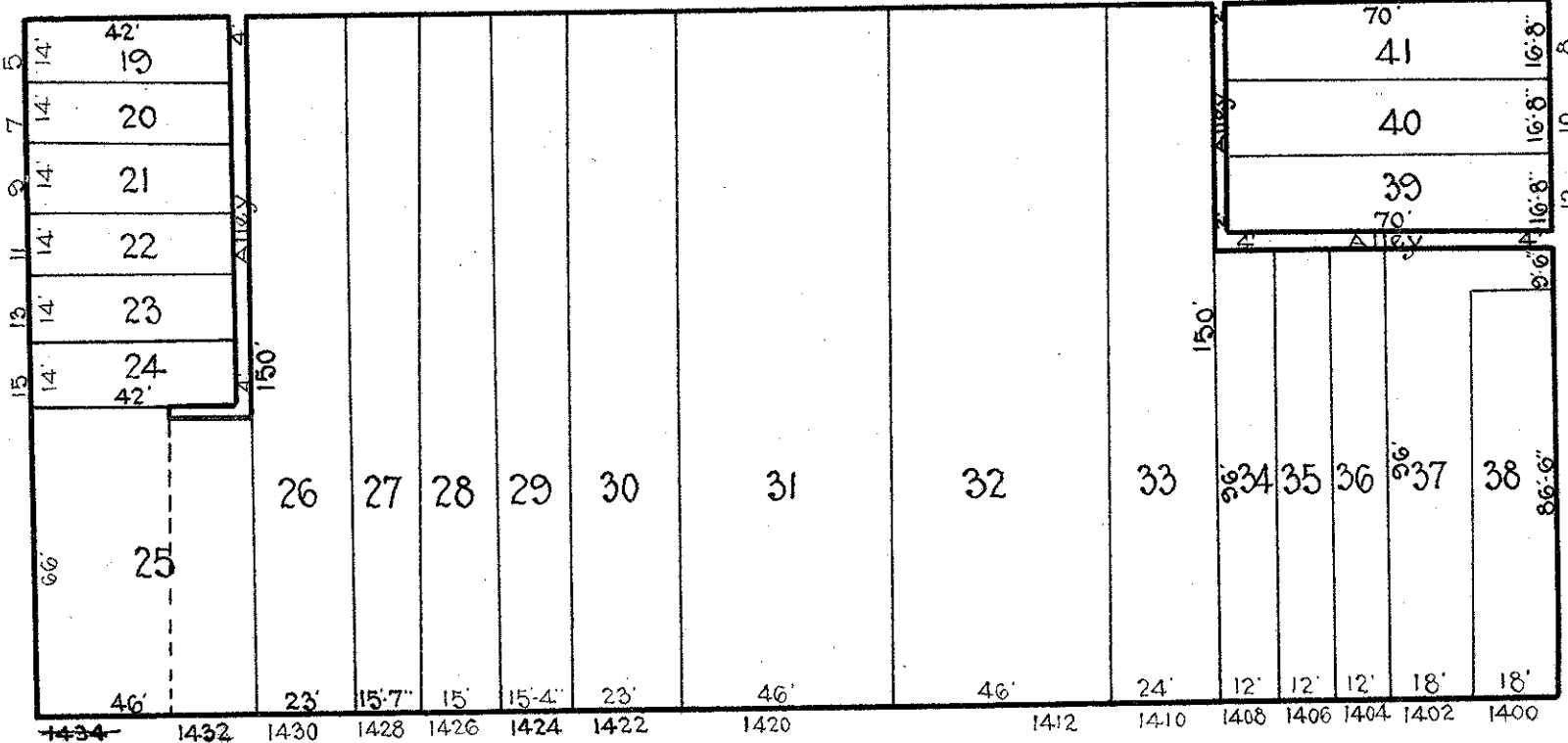


BOOTH ST.

ST.

S. STRICKER

S. CALHOUN



HOLLINS ST.

ST.

S. NORRIS ST.

231

TRACED BY Geol. Moorehead.

LETTERED BY W. M. Lee.

CHECKED BY

**NOTICE**

THIS IS A REAL PROPERTY PLAT AS PROVIDED FOR UNDER ARTICLE 76(d) OF THE CITY CHARTER. IT IS COMPILED FROM TITLE AND OTHER SOURCES AND IS NOT AN AUTHENTIC SURVEY.

CITY OF BALTIMORE  
 DEPARTMENT OF PUBLIC WORKS  
 BUREAU OF SURVEYS  
 PROPERTY LOCATION DIVISION

WARD 19 SECTION 13  
 BLOCK 214

SCALE 1" = 40' 0" DATE Oct. 1929