

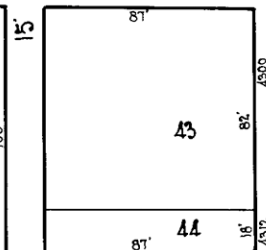
LOCUST ST. 60'

ST. 60'

PENNINGTON AVE. 8'

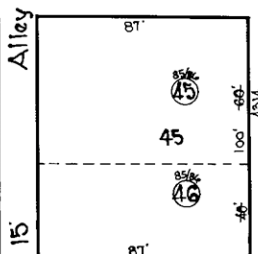
AVE. 8'

1601	1603	1605	1607	1609	1611	1613	1615	1617	1619	1621	1623	1625	1627	1629	1631	1633	1635	1637	1639	1641
16'	14'	14'	14'	14'	14'	14'	14'	14'	14'	14'	12'	12'	12'	12'	12'	12'	12'	14'	14'	16'
42	41	40	39	38	37	36	35	34	33	32	31	30	29	28	27	26	25	24	23	22



20' Alley

1600	1602	1604	1606	1608	1610	1612	1614	1616	1618	1620	1622	1624	1626	1628	1630	1632	1634	1636	1638	1640
16'	14'	14'	14'	14'	14'	14'	14'	14'	14'	14'	14'	14'	14'	14'	14'	14'	14'	14'	14'	16'
21	20	19	18	17	16	15	14	13	12	11	10	9	8	7	6	5	4	3	2	1



HAZEL ST. 60'

ST. 60'

PENNINGTON AVE. 8'

CURTIS AVE. 8'

NOTICE
 THIS IS A REAL PROPERTY PLAT AS PROVIDED FOR UNDER ARTICLE 76(d) OF THE CITY CHARTER. IT IS COMPILED FROM TITLE AND OTHER SOURCES AND IS NOT AN AUTHENTIC SURVEY

NOTE ÷ BLOCK 25-8-73 FOR 1941

72 25

CITY OF BALTIMORE
 DEPARTMENT OF PUBLIC WORKS
 BUREAU OF PLANS & SURVEYS
 PROPERTY LOCATION DIVISION

WARD 25 SECTION 8
 BLOCK 7225

SCALE 1 inch = 50 FT. DATE Feb. 1931

TRACED BY C. H. BAIN
 LETTERED BY G. Moorehead
 CHECKED BY