

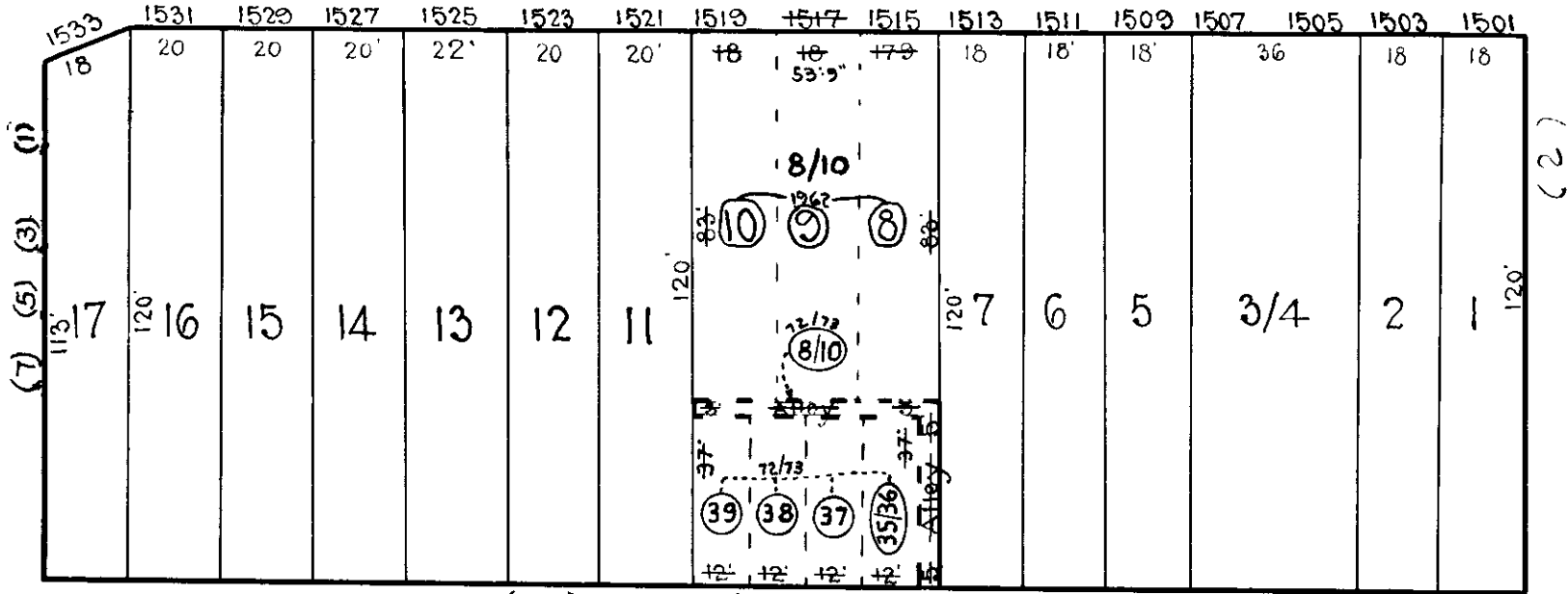
REVISIONS

Lots 8,9,10 Cons'd Per O.O. Let., C. Sh. 8899
 LOTS 8/10, 35/36, 37, 38, 39 CONS'D PER O.O.; C. SH. 658

W. BALTIMORE ST.

ST.

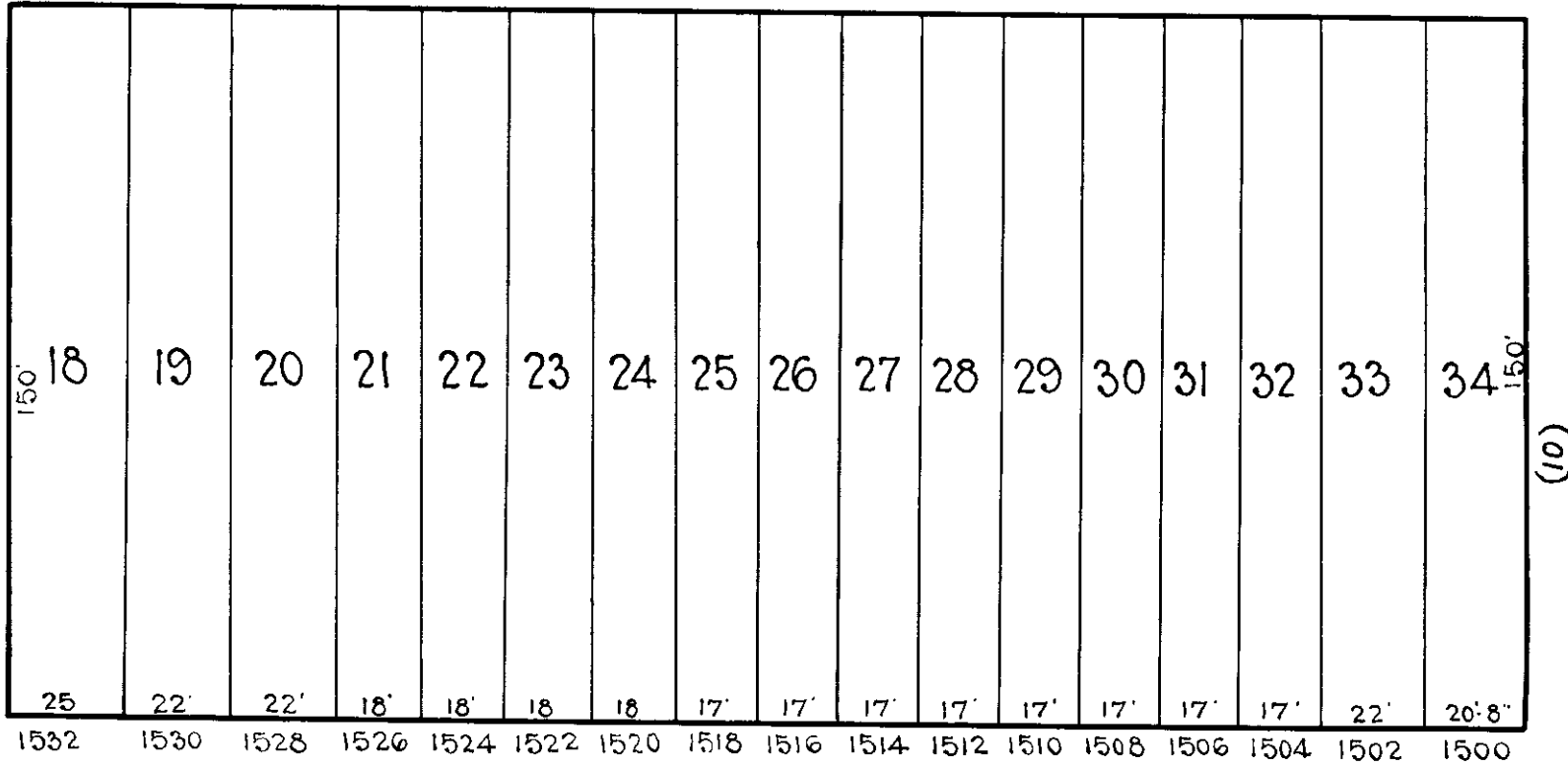
ST.



BOOTH ST.

ST.

S. GILMOR



HOLLINS ST.

ST.

ST.

S. STRICKER

NOTICE

THIS IS A REAL PROPERTY PLAT AS PROVIDED FOR UNDER ARTICLE 76(d) OF THE CITY CHARTER IT IS COMPILED FROM TITLE AND OTHER SOURCES AND IS NOT AN AUTHENTIC SURVEY.

TRACED BY Geo. J. Moorehead

LETTERED BY W.M. Lee

CHECKED BY

CITY OF BALTIMORE
 DEPARTMENT OF PUBLIC WORKS
 BUREAU OF SURVEYS
 PROPERTY LOCATION DIVISION

WARD 19 SECTION 7
 BLOCK 213

SCALE 1" = 40'-0" DATE Oct 1929