

REVISIONS

Lot 1 & 45 Corrected for 1937 Sh. No 1055
 Block changed per P.S. C.Sh. 3053

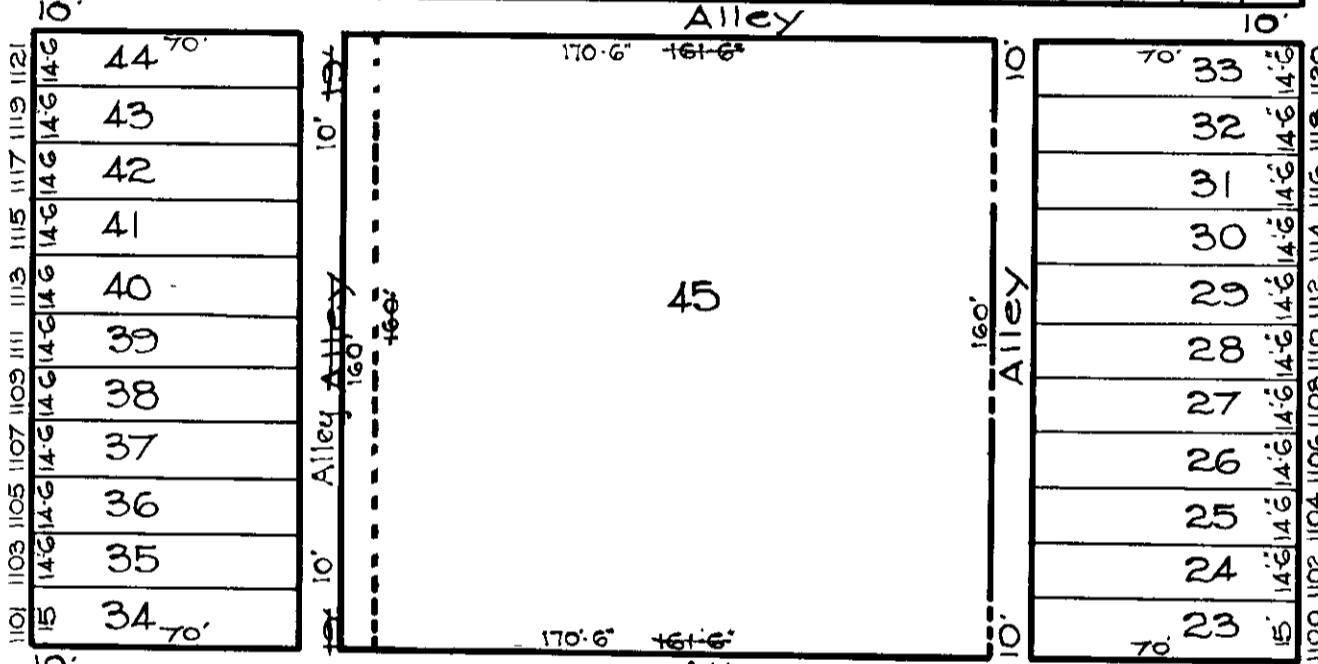
E. BIDDLE ST.

ST.

AVE.

2601	2603	2605	2607	2609	2611	2613	2615	2617	2619	2621	2623	2625	2627	2629	2631	2633	2635	2637	2639	
18	18	18	18	18	16	16	16	16	16	16	16	16	16	16	16	16	16	16	16	16
46	47	48	49	50	51	52	53	54	55	56	57	58	59	60	61	62	63	64	65	65
70'								70'												70'

AVE.



N. LUZERNE

1101	1103	1105	1107	1109	1111	1113	1115	1117	1119	1121
15	14	14	14	14	14	14	14	14	14	14
34	35	36	37	38	39	40	41	42	43	44
70'										70'
1100	1102	1104	1106	1108	1110	1112	1114	1116	1118	1120
15	14	14	14	14	14	14	14	14	14	14
23	24	25	26	27	28	29	30	31	32	33
70'										70'

N. LAKEWOOD

E. CHASE ST.

ST.

NOTE: BLOCK 8-15-1557 FOR 1943

TRACED BY MOOREHEAD
 LETTERED BY JOS. J. ROKOSKY
 CHECKED BY R. LITZ
J.R. BAIN

NOTICE
 THIS IS A REAL PROPERTY PLAT AS PROVIDED FOR UNDER ARTICLE 76 OF THE CITY CHARTER. IT IS COMPILED FROM TITLE AND OTHER SOURCES AND IS NOT AN AUTHENTIC SURVEY

CITY OF BALTIMORE
 DEPARTMENT OF PUBLIC WORKS
 BUREAU OF PLANS & SURVEYS
 PROPERTY LOCATION DIVISION
 WARD **8** SECTION **22**
 BLOCK **1557**
 SCALE 1/4" = 50 FT. DATE April 1929