

**REVISIONS**

LOTS 32 & 33 PER DEEDS; C.S.H. 80-558.  
LOT 50 DIV PER DEED C.S.H. 80-682

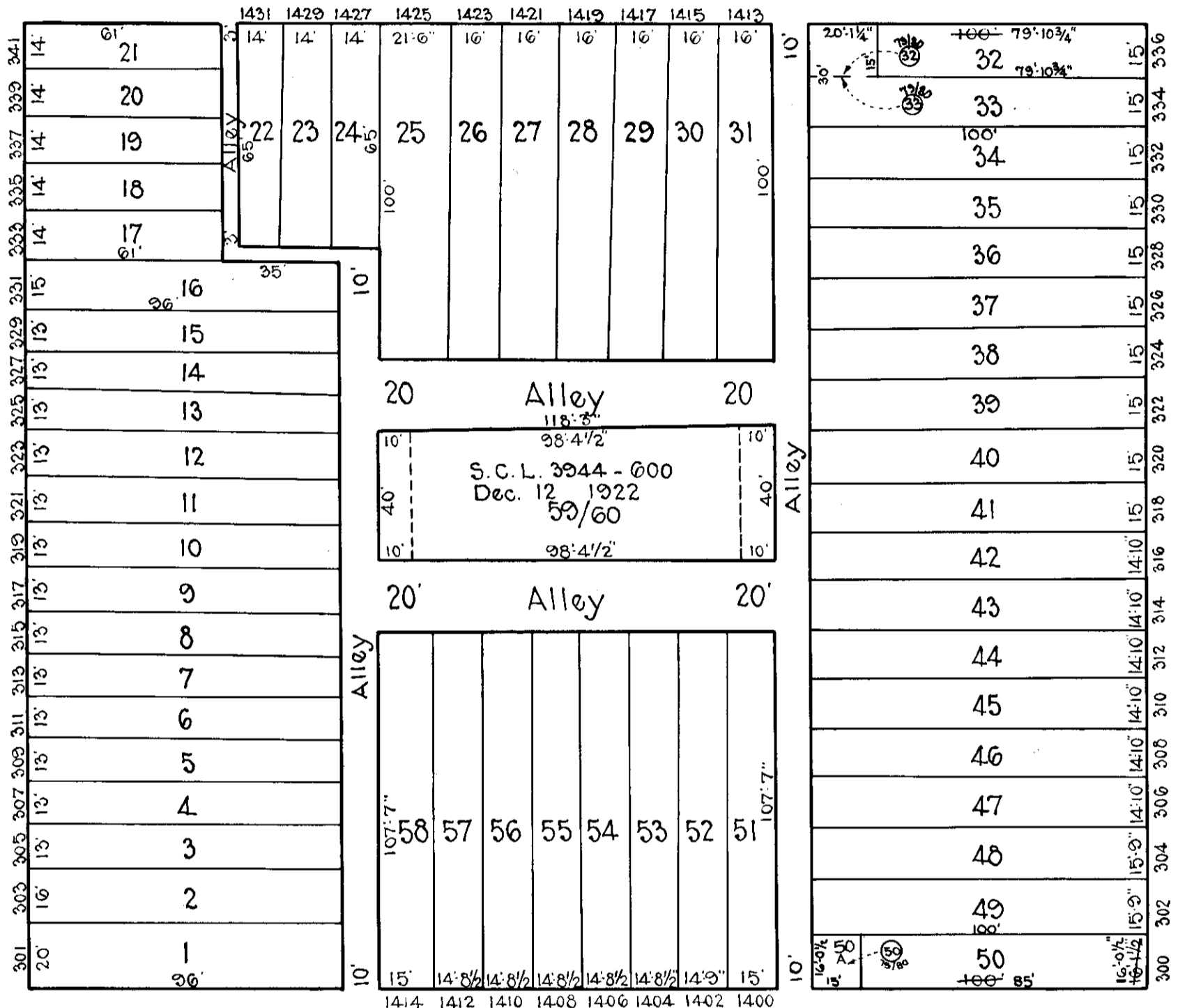
PUBLIC WALK

137  
NOW BED OF I-170

W. MULBERRY ST.

ST.

ST.



ST.

N. CALHOUN ST.

W. SARATOGA ST.

ST.

167

TRACED BY Geo. Mearnshead  
LETTERED BY W.M. Lee  
CHECKED BY \_\_\_\_\_

**NOTICE**  
THIS IS A REAL PROPERTY PLAT AS PROVIDED FOR UNDER ARTICLE 76(d) OF THE CITY CHARTER. IT IS COMPILED FROM TITLE AND OTHER SOURCES AND IS NOT AN AUTHENTIC SURVEY.

CITY OF BALTIMORE  
DEPARTMENT OF PUBLIC WORKS  
BUREAU OF SURVEYS  
PROPERTY LOCATION DIVISION  
WARD 19 SECTION 1  
BLOCK 152  
SCALE 1" = 40.0' DATE Oct. 1929