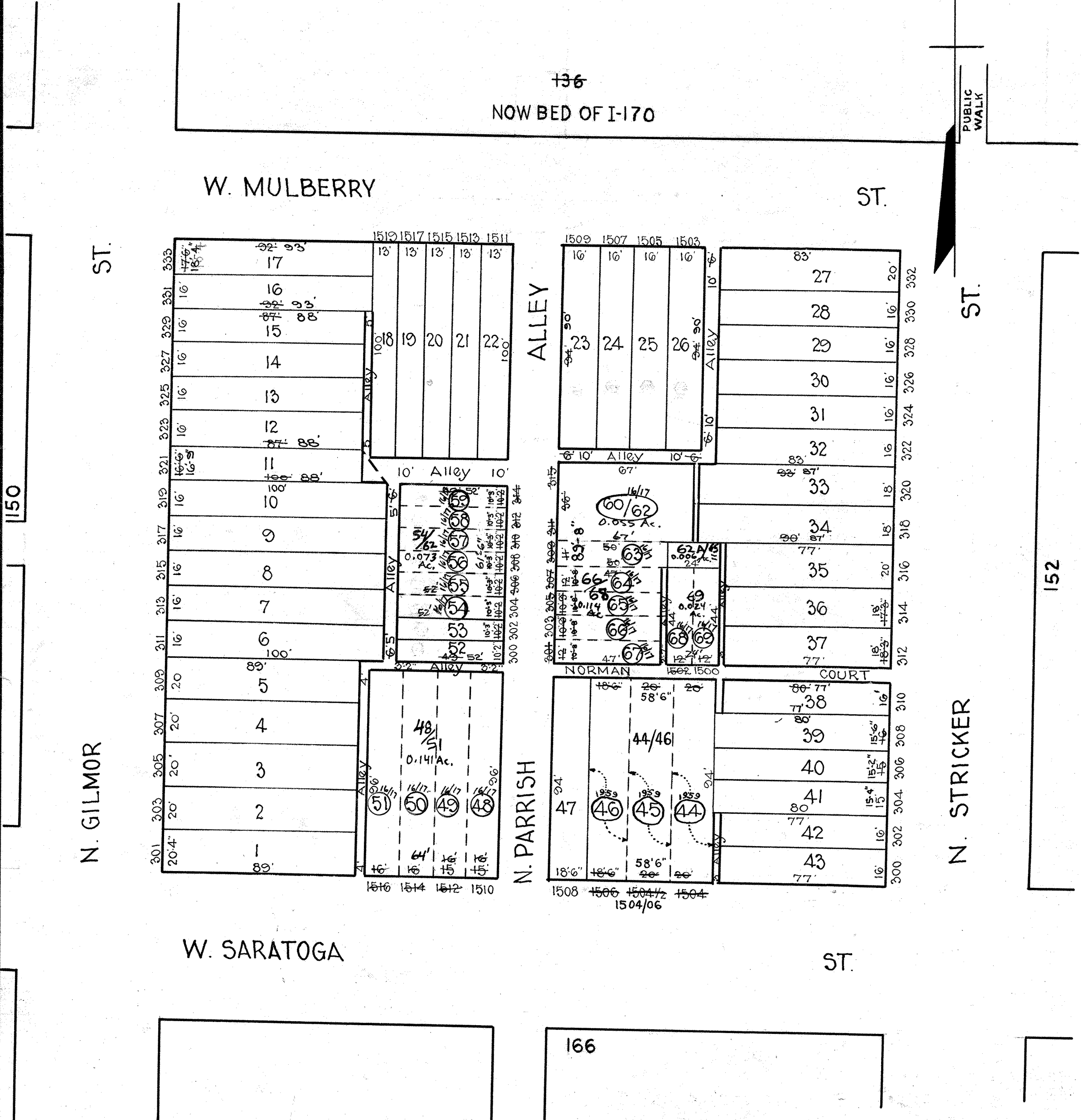


REVISIONS
 Dim. Lots 12-17 per Deeds. S.Ch. 74-0
 Lot 44, 45, 46 cons'd Per D of A C. Sh. 8000
 LOTS 11, 23-26, 33, 34 & 52-59 DIM CHANGE C. SH 78-156 & 157
 LOT 60/62 DIV. PER SUBDIV. CH. SH. 14-131
 LOTS 48-51 CONSOLIDATED & LOTS 68 & 69 CONS'D PER O.O.; CH. SH. 17-201
 LOTS 54-59 CONS'D PER O.O.; CH. SH. 17-202
 LOTS 60/62-67 CONS'D PER O.O.; CH. SH. 17-203
 LOTS 48-51 CONS'D, LOTS 68 & 69 CONS'D PER O.O.; CH. SH. 17-203



TRACED BY _____
 LETTERED BY W.M.Lee
 CHECKED BY _____

NOTICE
 THIS IS A REAL PROPERTY PLAT AS PROVIDED FOR UNDER ARTICLE 76(d) OF THE CITY CHARTER. IT IS COMPILED FROM TITLE AND OTHER SOURCES AND IS NOT AN AUTHENTIC SURVEY.

CITY OF BALTIMORE
 DEPARTMENT OF PUBLIC WORKS
 BUREAU OF SURVEYS
 PROPERTY LOCATION DIVISION
 WARD 19 SECTION 4
 BLOCK 151
 SCALE 1" = 40' 0" DATE NOV. 1929