

REVISIONS

Dim. Lots: 80-89 per Deeds. C.Sh. 798.
 Lots 64 & 65 Cons'd Per App. 2408 C.Sh. 1247.
 Dim. Lots, 7, 20, 40 per Bauersfeld. C.Sh. 1473D.
 Lots 50 & 51 Cons'd. Per App. C.Sh. 3331.
 Lots 57 & 67 CORRECTED PER DEED C.SH. 9709
 Lots 46 & 47 Cons'd Per A.O. C.Sh. 9881
 Lots 66 THRU 79, Des. Ch Per P.L.S. C.Sh. 301A
 Lot 33/34 PER O.O.; C.Sh. 76-096.
 Lots 64/65 & 1 PER DEED; Lot 66 PER DEED PACK; C.Sh. 76-096.
 Lots 56 & 68 PER DEED; C.Sh. 77-138.
 Lots 64 & 65 PER. DEED; C.Sh. 78-078.
 Lots 46/47, 48, 49, Cons'd Per. O.O.
 C.Sh. 86-230
 Lots 64, 65 CORR PER PLS C.H. SH. 03-105

244

S. FULTON

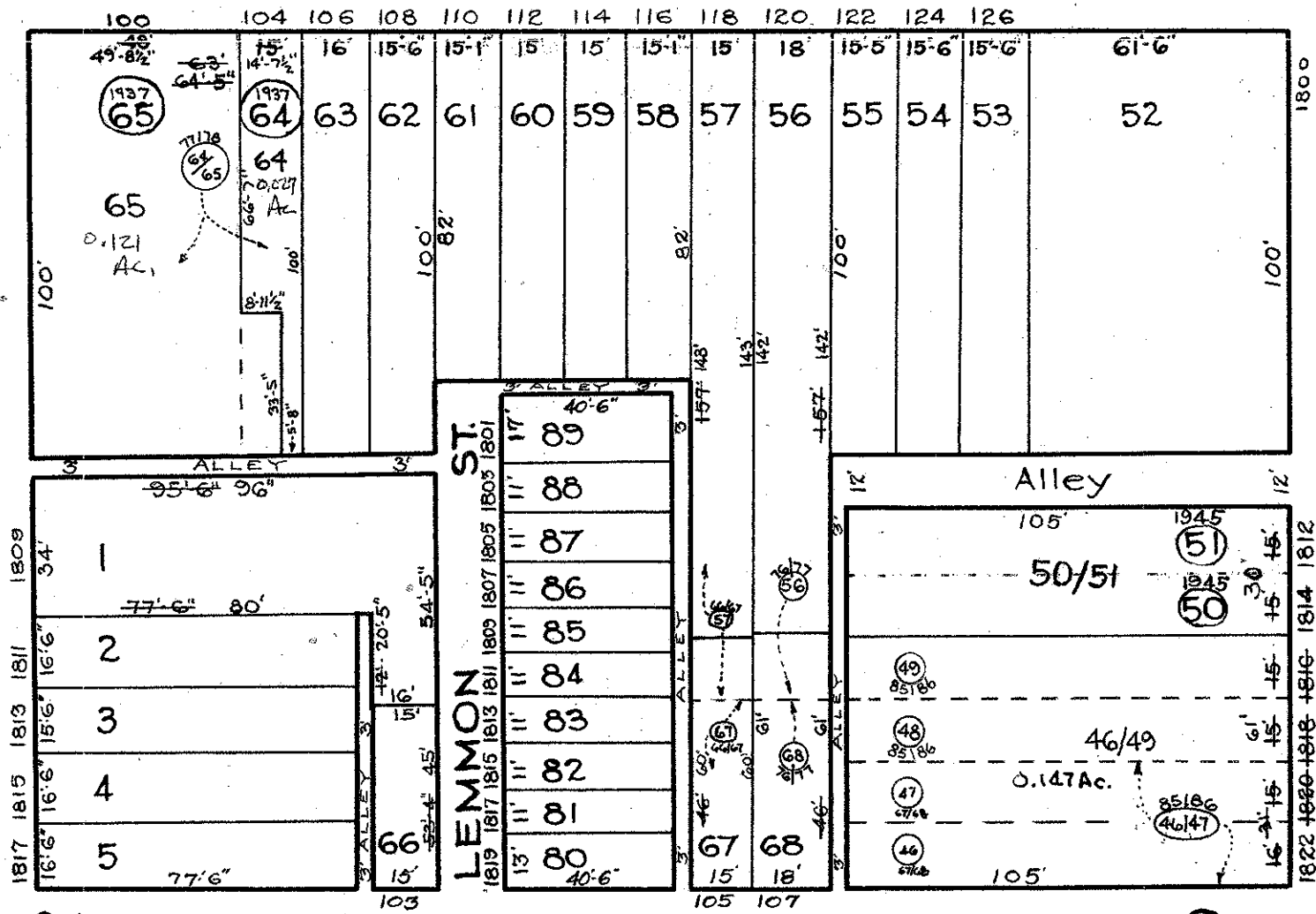
AVE.

ST.

ST.

227

260

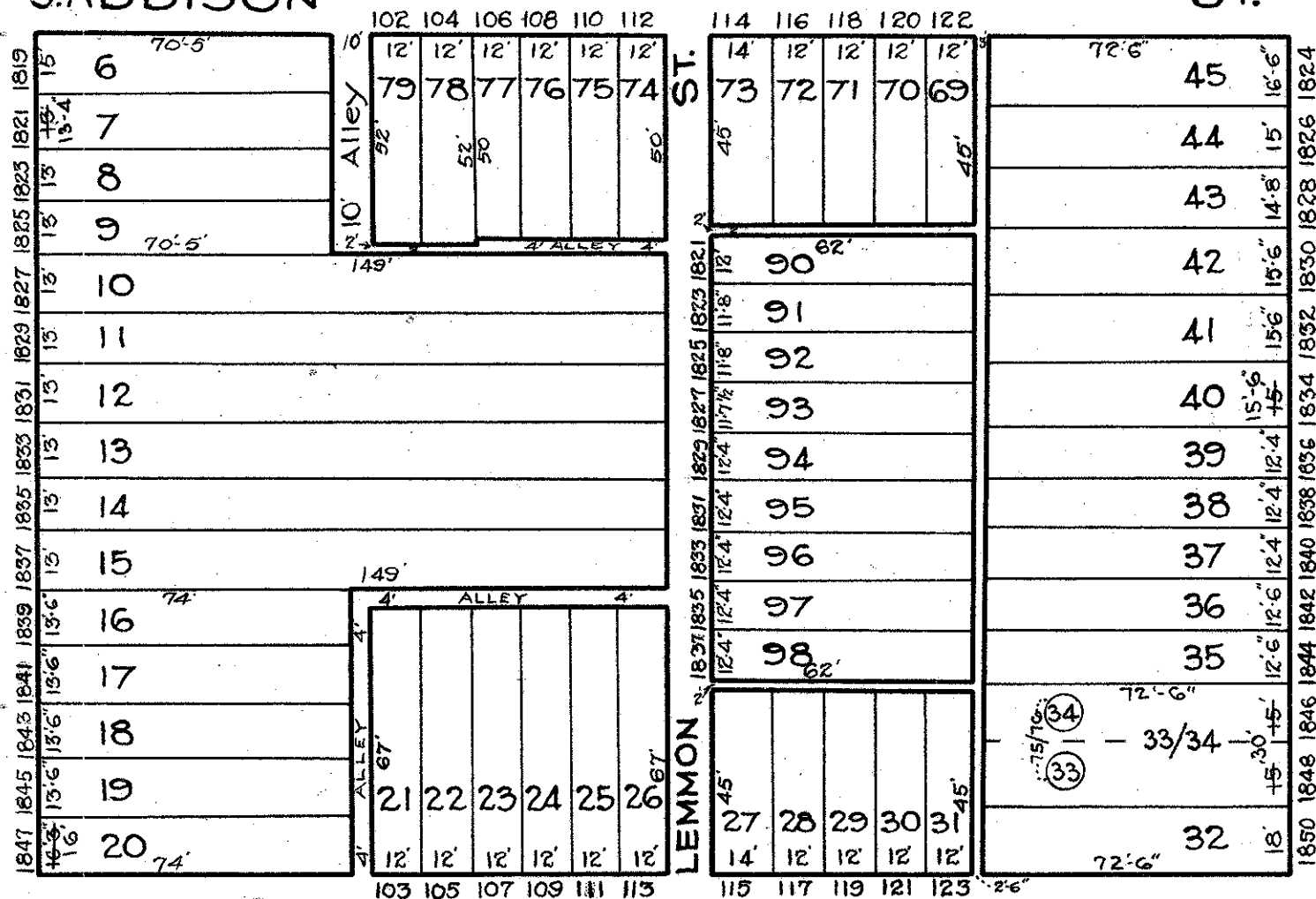


S. ADDISON

ST.

W. LOMBARD

W. PRATT



S. MONROE

ST.

242

NOTICE
 THIS IS A REAL PROPERTY PLAT AS PROVIDED FOR UNDER ARTICLE 76(d) OF THE CITY CHARTER. IT IS COMPILED FROM TITLE AND OTHER SOURCES AND IS NOT AN AUTHENTIC SURVEY.

CITY OF BALTIMORE
 DEPARTMENT OF PUBLIC WORKS
 BUREAU OF SURVEYS
 PROPERTY LOCATION DIVISION
 WARD 19 SECTION 8
 BLOCK 243
 SCALE 1 INCH = 40 FT. DATE July 1929

TRACED BY G. Moorehead
 LETTERED BY G. Moorehead
 Jos. J. Rokosky
 CHECKED BY