



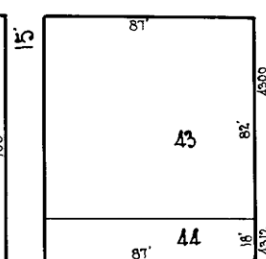
LOCUST ST. 60'

ST. 60'

PENNINGTON AVE. &

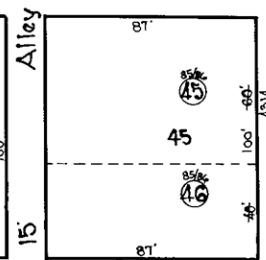
AVE. &

| | | | | | | | | | | | | | | | | | | | | |
|------|------|------|------|------|------|------|------|------|------|------|------|------|------|------|------|------|------|------|------|------|
| 1601 | 1603 | 1605 | 1607 | 1609 | 1611 | 1613 | 1615 | 1617 | 1619 | 1621 | 1623 | 1625 | 1627 | 1629 | 1631 | 1633 | 1635 | 1637 | 1639 | 1641 |
| 16' | 14' | 14' | 14' | 14' | 14' | 14' | 14' | 14' | 14' | 14' | 12' | 12' | 12' | 12' | 12' | 12' | 12' | 14' | 14' | 16' |
| 42 | 41 | 40 | 39 | 38 | 37 | 36 | 35 | 34 | 33 | 32 | 31 | 30 | 29 | 28 | 27 | 26 | 25 | 24 | 23 | 22 |



20' Alley

| | | | | | | | | | | | | | | | | | | | | |
|------|------|------|------|------|------|------|------|------|------|------|------|------|------|------|------|------|------|------|------|------|
| 1600 | 1602 | 1604 | 1606 | 1608 | 1610 | 1612 | 1614 | 1616 | 1618 | 1620 | 1622 | 1624 | 1626 | 1628 | 1630 | 1632 | 1634 | 1636 | 1638 | 1640 |
| 16' | 14' | 14' | 14' | 14' | 14' | 14' | 14' | 14' | 14' | 14' | 14' | 14' | 14' | 14' | 14' | 14' | 14' | 14' | 14' | 16' |
| 21 | 20 | 19 | 18 | 17 | 16 | 15 | 14 | 13 | 12 | 11 | 10 | 9 | 8 | 7 | 6 | 5 | 4 | 3 | 2 | 1 |



HAZEL ST. 60'

ST. 60'

PENNINGTON AVE. &

AVE. &

NOTICE
 THIS IS A REAL PROPERTY PLAT AS PROVIDED FOR UNDER ARTICLE 76(d) OF THE CITY CHARTER. IT IS COMPILED FROM TITLE AND OTHER SOURCES AND IS NOT AN AUTHENTIC SURVEY

NOTE ÷ BLOCK 25-8-73 FOR 1941

72 25

CITY OF BALTIMORE
 DEPARTMENT OF PUBLIC WORKS
 BUREAU OF PLANS & SURVEYS
 PROPERTY LOCATION DIVISION
 WARD 25 SECTION 8
 BLOCK 7225
 SCALE 1 inch = 50 FT. DATE Feb. 1931

TRACED BY C. H. BAIN
 LETTERED BY G. Moorehead
 CHECKED BY